

DIN43675



250A



630A



630A



1000A



2000A



3150A



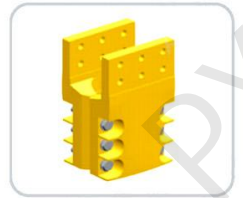
4500A



6300A

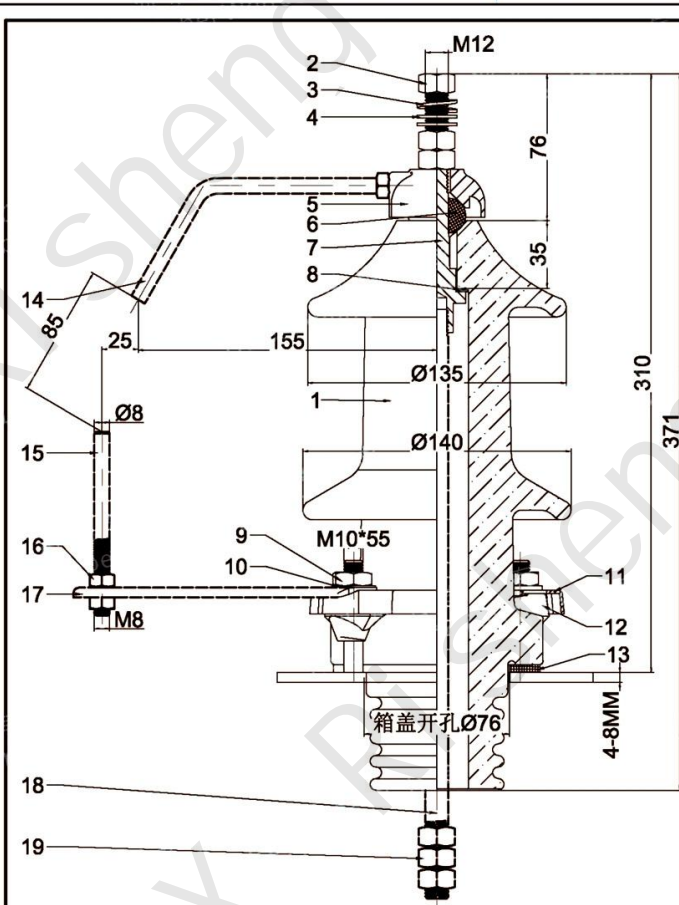


8000A



12500A

**DIN42531**



Insulation Levels acc. to IEC 60137		
1	Highest Voltage Rating [KV]	12
2	Current Rating [A]	250
3	BIL Rating [KV]	70
4	Creepage Distance [mm]	295

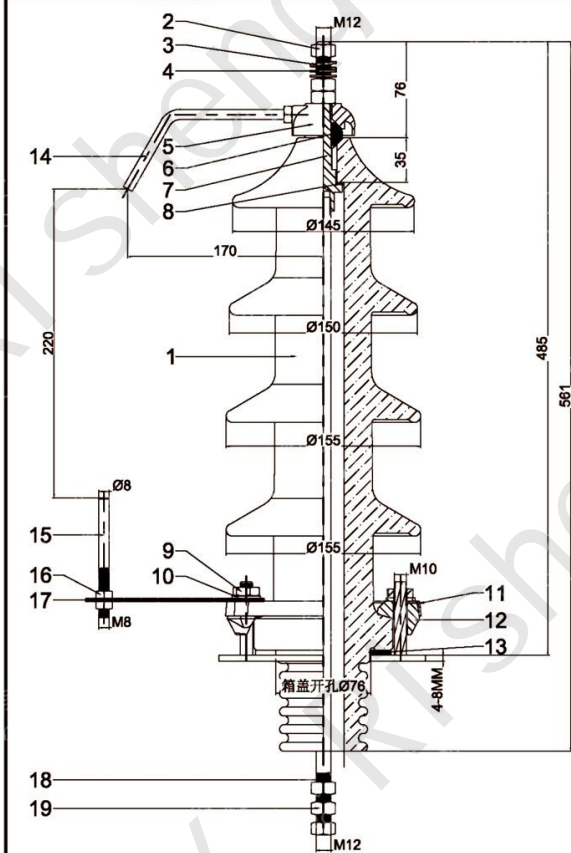
Optional	ITEM NO.	Part Name	Material	Quantity
	19	Nut M12	304 Stainless Steel	3
	18	Stem	Brass	1
	17	V Bracket	304 Stainless Steel	1
	16	Nut M8	304 Stainless Steel	3
	15	Bottom Arcing Horn	304 Stainless Steel	1
	14	Top Arcing Horn	304 Stainless Steel	1

ITEM NO.	Part Name	Part Number	Material	Quantity
13	gasket 180*78*4		NBR	1
12	Alu. Clamp		Alu	4
11	Fixing Ring		304 Stainless Steel	1
10	Washer		304 Stainless Steel	4
9	Nut M10		304 Stainless Steel	4
8	Gasket 32*16*1.5		Klingorff	1
7	Stem		Brass	1
6	Ring gasket 30*12*18		NBR	1
5	Cap		Brass	1
4	Washer		Brass	2
3	Spring Washer		304 Stainless Steel	1
2	Nut M12		Brass	3
1	Top Porcelain		Porcelain	1

Design by:	Product name:	萍乡市日升电气有限公司
Examined by:	10NF250A BUSHING	
Approved by:	DIN 42531	
Date:	DRAWING NO.	



# DIN42531



Insulation Levels acc. to IEC 60137		
1	Highest Voltage Rating [kV]	12
2	Current Rating [A]	250
3	BIT. Rating [kV]	70
4	Creeepage Distance [mm]	800

Optional	Part No.	Part Name	Material	Quantity
	19	Nut M12	304 Stainless Steel	3
	18	Stem	Brass	1
	17	V Bracket	304 Stainless Steel	1
	16	Nut M8	304 Stainless Steel	3
	15	Bottom Arcing Horn	304 Stainless Steel	1
	14	Top Arcing Horn	304 Stainless Steel	1

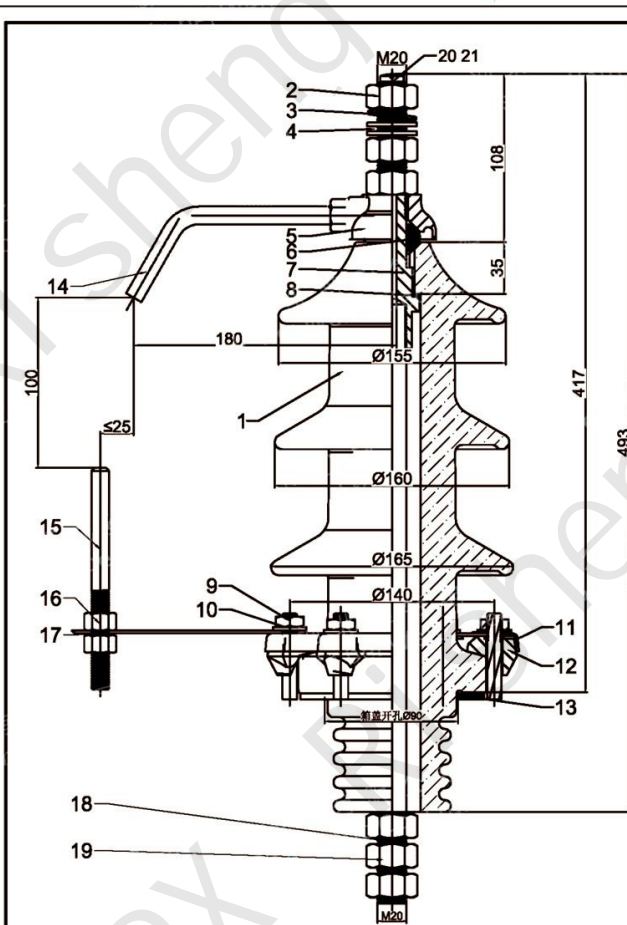
13	gasket 180*76*4		NBR	1
12	Alu. Clamp		Alu	4
11	Fixing Ring		304 Stainless Steel	1
10	Washer		304 Stainless Steel	4
9	Nut M10		304 Stainless Steel	4
8	Gasket 32*15*1.5		Klingerit	1
7	Stem		Brass	1
6	Ring gasket 30*12*18		NBR	1
5	Cap		Brass	1
4	Washer		Brass	2
3	Spring Washer		304 Stainless Steel	1
2	Nut M12		Brass	3
1	Top Porcelain		Porcelain	1

ITEM NO.	Part Name.	Part Number.	Material	Quantity
----------	------------	--------------	----------	----------

Design by:	Product name:	萍乡市日升电气有限公司
Examined by:	30NF250A BUSHING	
Approved by:	DIN 42531	
Date:	DRAWING NO.	



**DIN42532**



Insulation Levels acc. to IEC 60137		
1	Highest Voltage Rating [kV]	24
2	Current Rating [A]	630
3	BIT Rating [kV]	70
4	Creepage Distance [mm]	445

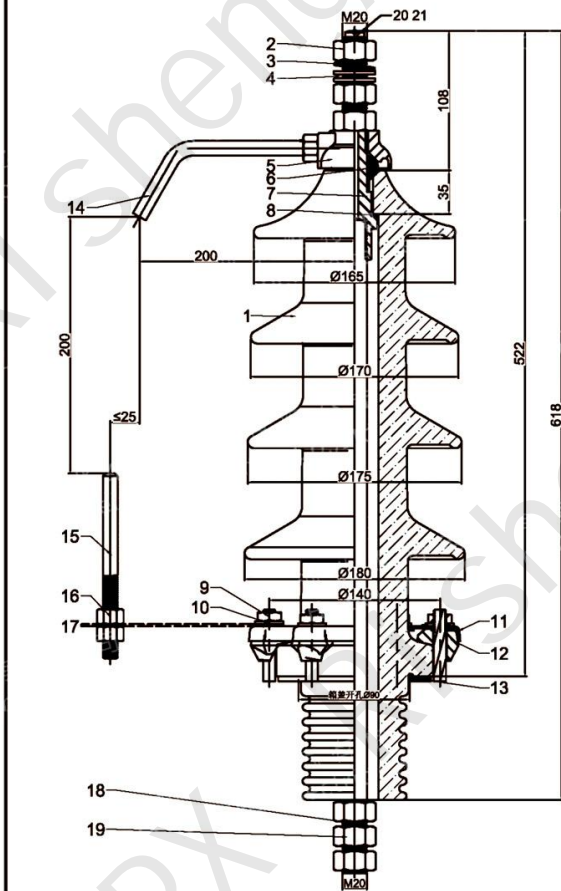
Optional	Part No.	Part Name	Material	Quantity
	19	Nut M20	304 Stainless Steel	3
	18	Stem	Brass	1
	17	Bracket	304 Stainless Steel	1
	16	Nut M12	304 Stainless Steel	3
	15	Bottom Arcing Horn	304 Stainless Steel	1
	14	Top Arcing Horn	304 Stainless Steel	1

ITEM NO.	Part Name	Part Number	Material	Quantity
21	gasket		NBR	1
20	Vent plug		Brass	1
13	gasket 125°90°4		NBR	1
12	Alu. Clamp		Alu	6
11	Fixing Ring		304 Stainless Steel	1
10	Washer		304 Stainless Steel	6
9	Nut M10		304 Stainless Steel	6
8	Gasket 38°24°2		Klingerit	1
7	Stem		Brass	1
6	Ring gasket 38°20°18		NBR	1
5	Cap		Brass	1
4	Washer		Brass	2
3	Spring Washer		304 Stainless Steel	1
2	Nut M20		Brass	3
1	Top Porcelain		Porcelain	1

Design by:	Product name:
Examined by:	20NF630A BUSHING
Approved by:	DIN 42532
Date:	DRAWING NO.

萍乡市日升电瓷有限公司

# DIN42532



Insulation Levels acc. to IEC 60137		
1	Highest Voltage Rating [kV]	36
2	Current Rating [A]	630
3	Bl. Rating [kV]	70
4	Creeepage Distance [mm]	635

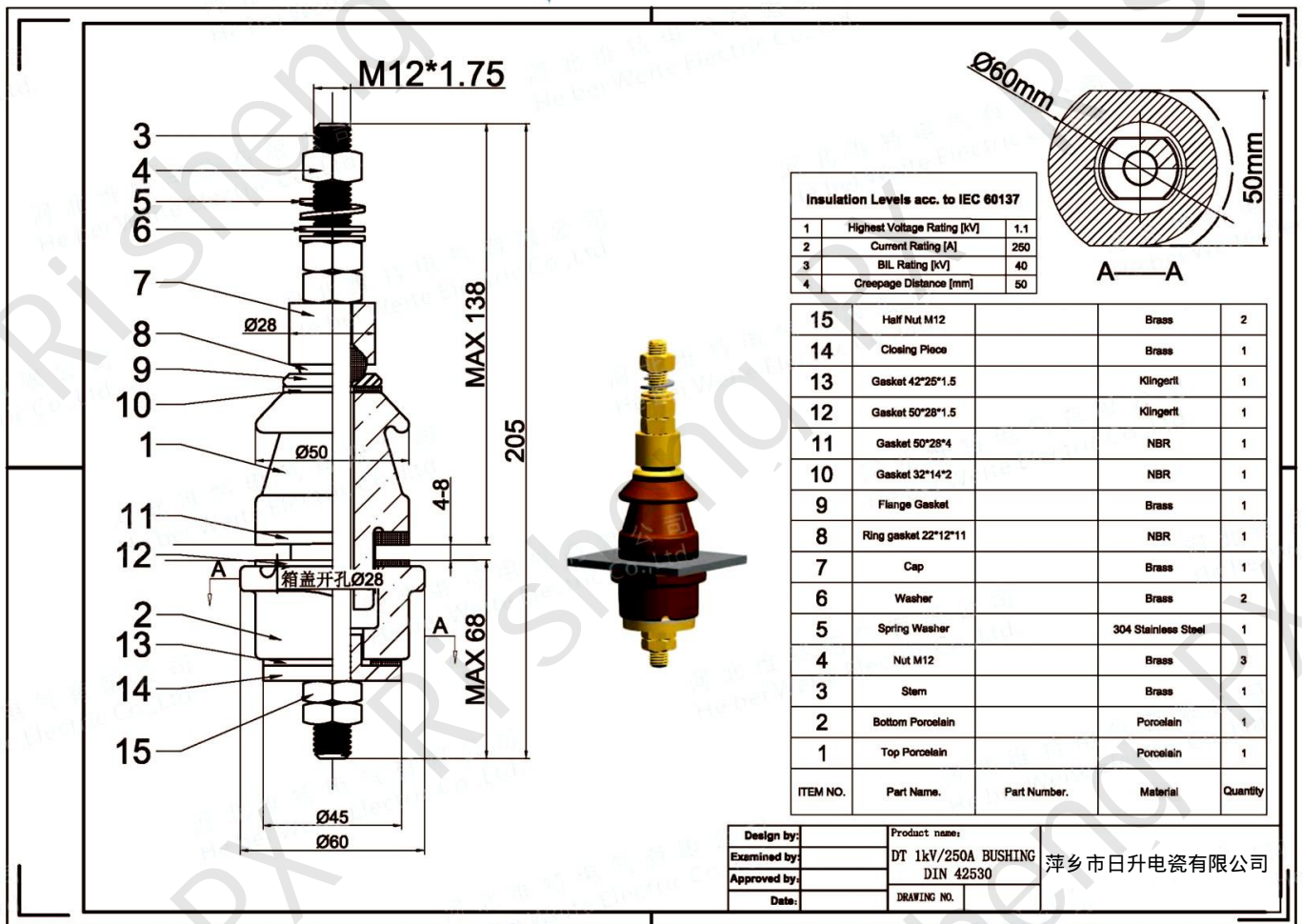
Optional	Part Name	Material	Quantity
19	Nut M20	304 Stainless Steel	3
18	Stem	Brass	1
17	Bracket	304 Stainless Steel	1
16	Nut M12	304 Stainless Steel	3
15	Bottom Arcing Horn	304 Stainless Steel	1
14	Top Arcing Horn	304 Stainless Steel	1

21	gasket	NBR	1
20	Vent plug	Brass	1
13	gasket 125°90°4	NBR	1
12	Alu. Clamp	Alu	6
11	Fixing Ring	304 Stainless Steel	1
10	Washer	304 Stainless Steel	6
9	Nut M10	304 Stainless Steel	6
8	Gasket 38°24°2	Klingerit	1
7	Stem	Brass	1
6	Ring gasket 38°20°18	NBR	1
5	Cap	Brass	1
4	Washer	Brass	2
3	Spring Washer	304 Stainless Steel	1
2	Nut M20	Brass	3
1	Top Porcelain	Porcelain	1

ITEM NO.	Part Name.	Part Number.	Material	Quantity
----------	------------	--------------	----------	----------

Design by:	Product name:	萍乡市日升陶瓷有限公司
Examined by:	30NF630A BUSHING	
Approved by:	DIN 42532	
Date:	DRAWING NO.	

DIN42530



Insulation Levels acc. to IEC 60137		
1	Highest Voltage Rating [kV]	1.1
2	Current Rating [A]	250
3	BIL Rating [kV]	40
4	Creepage Distance [mm]	50

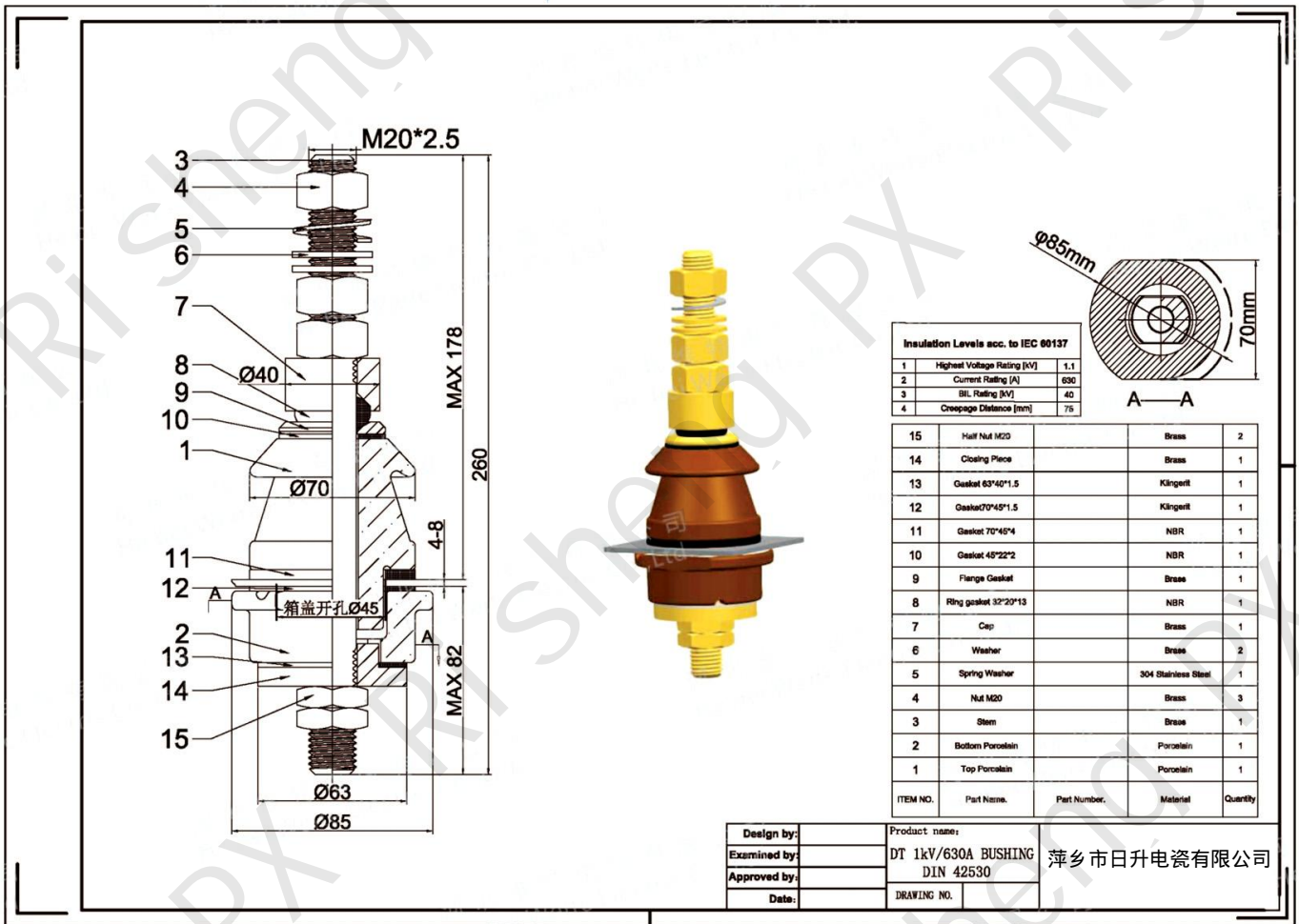
ITEM NO.	Part Name.	Part Number.	Material	Quantity
15	Half Nut M12		Brass	2
14	Closing Piece		Brass	1
13	Gasket 42°26'1.5		Klingerit	1
12	Gasket 50°28'1.5		Klingerit	1
11	Gasket 50°28'4		NBR	1
10	Gasket 32°14'2		NBR	1
9	Flange Gasket		Brass	1
8	Ring gasket 22°12'11		NBR	1
7	Cap		Brass	1
6	Washer		Brass	2
5	Spring Washer		304 Stainless Steel	1
4	Nut M12		Brass	3
3	Stem		Brass	1
2	Bottom Porcelain		Porcelain	1
1	Top Porcelain		Porcelain	1

Design by:	Product name:
Examined by:	DT 1kV/250A BUSHING
Approved by:	DIN 42530
Date:	DRAWING NO.

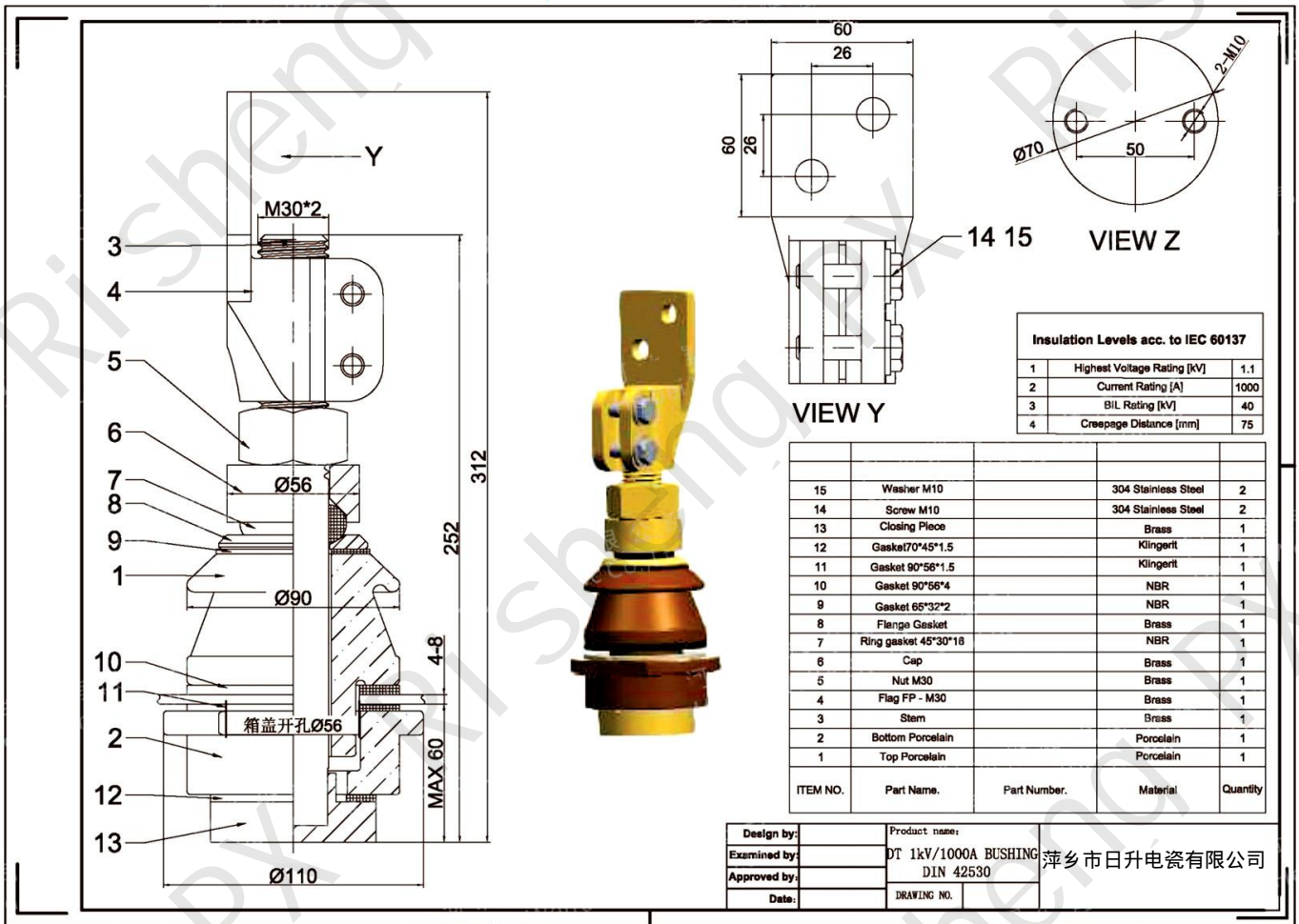
萍乡市日升陶瓷有限公司



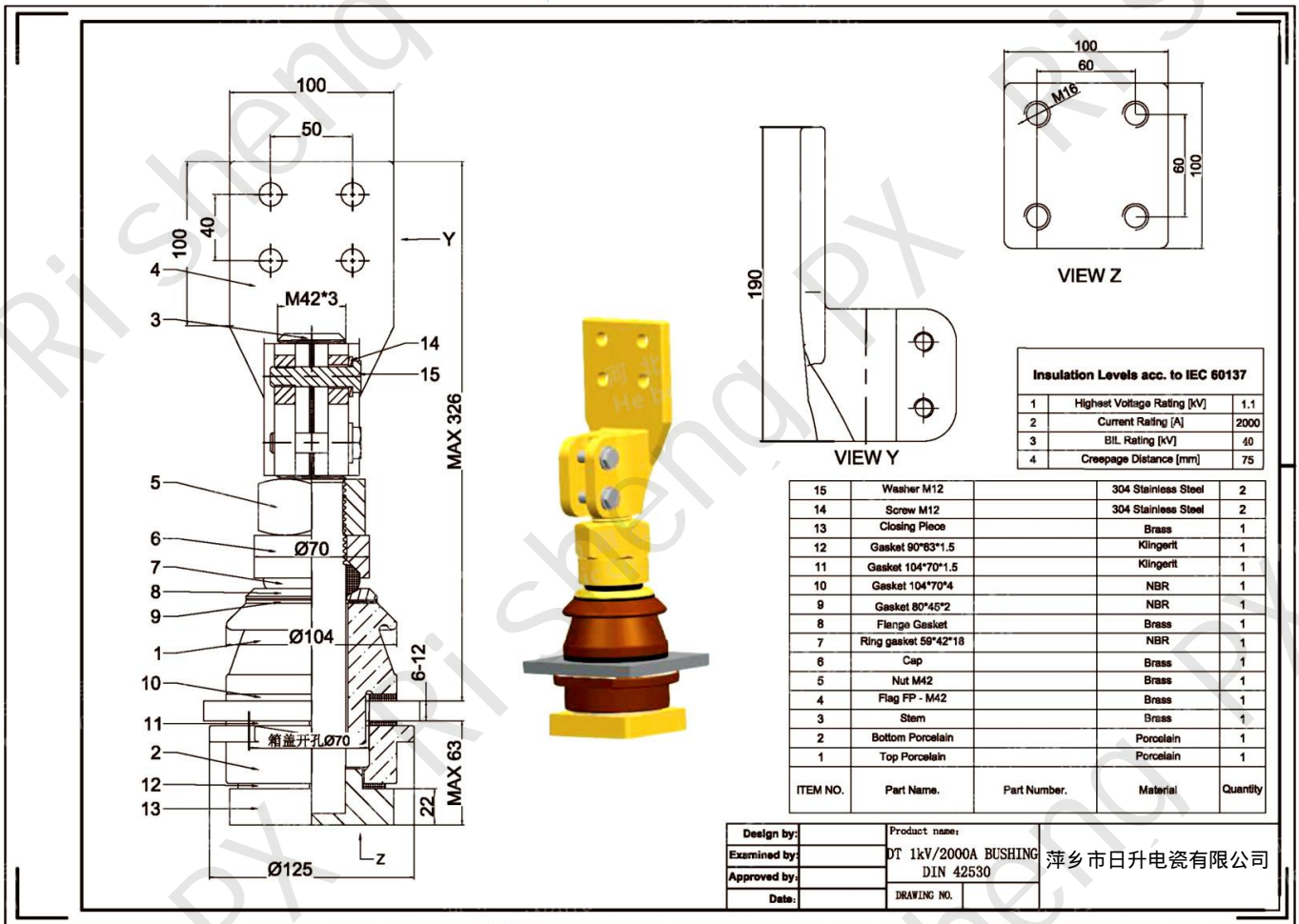
DIN42530



DIN42530

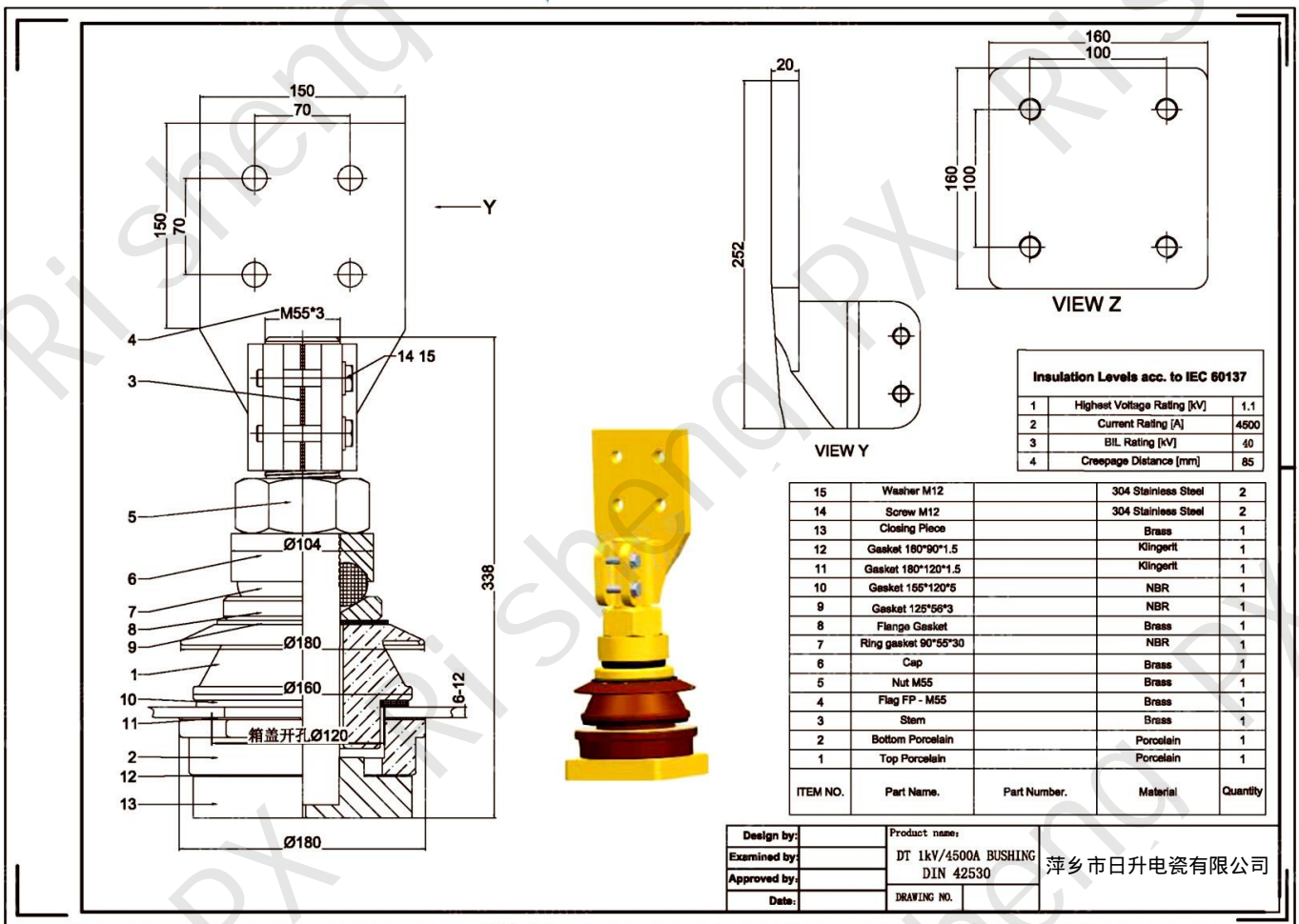


DIN42530

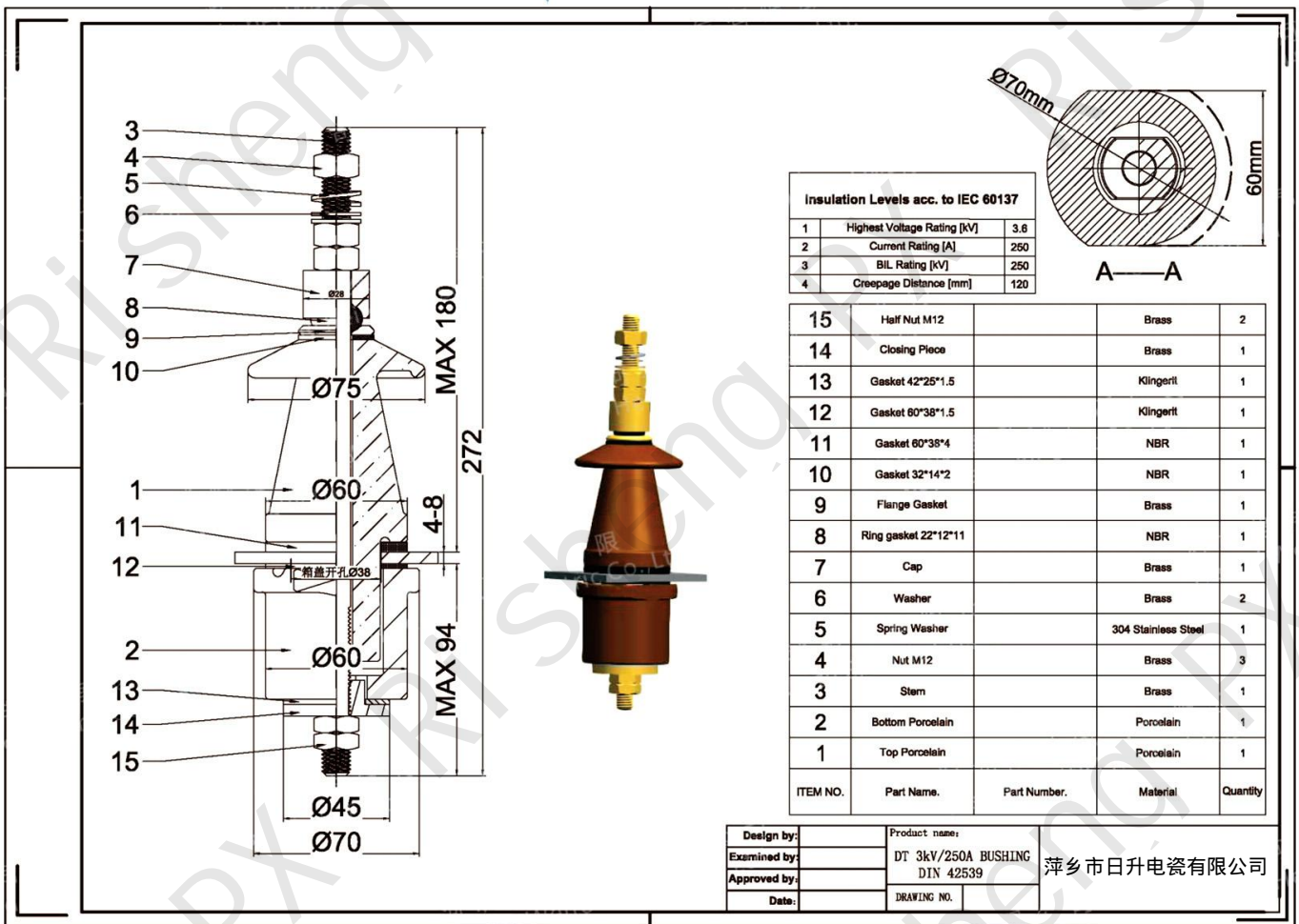




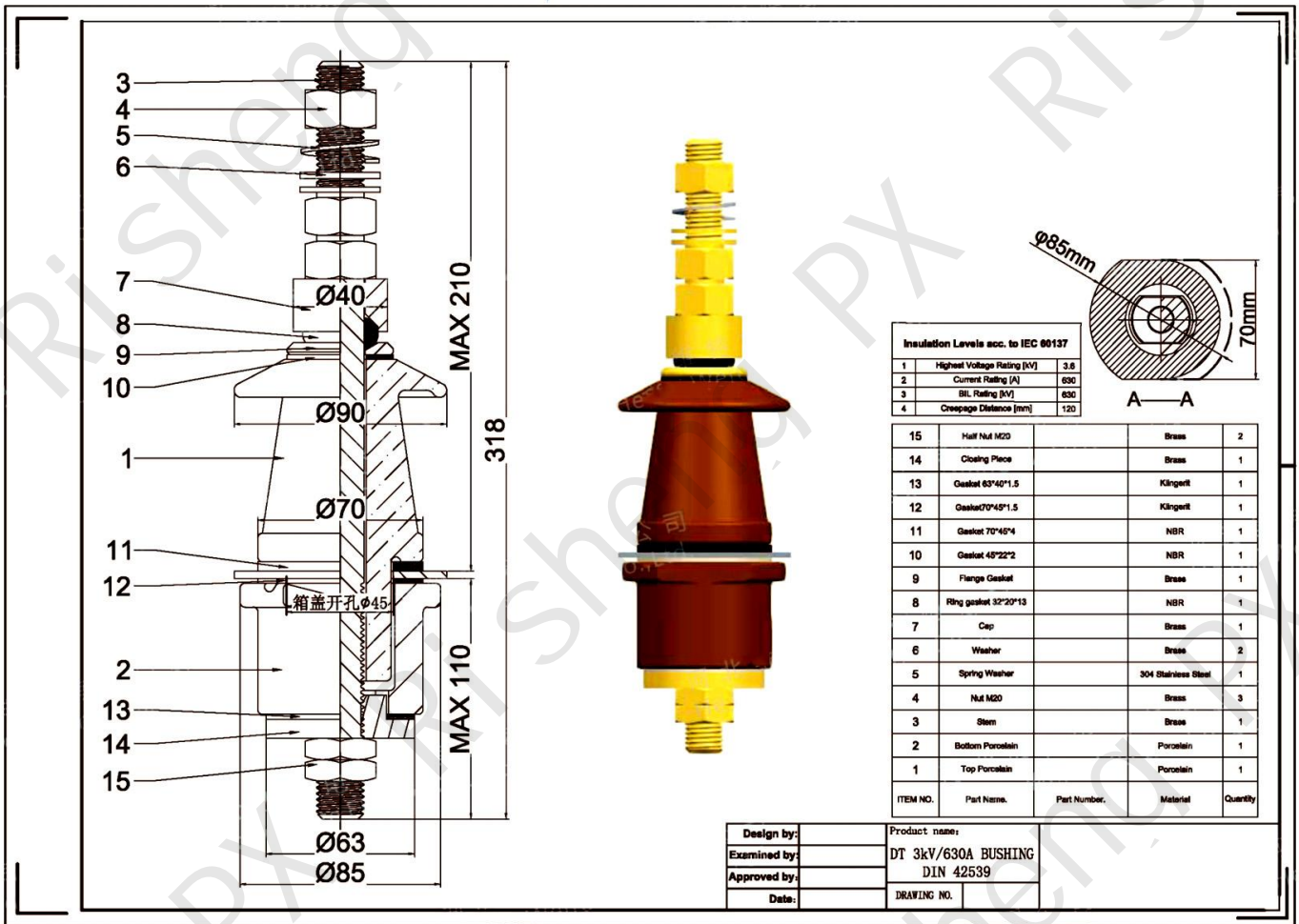
DIN42530



**DIN42539**



**DIN42539**



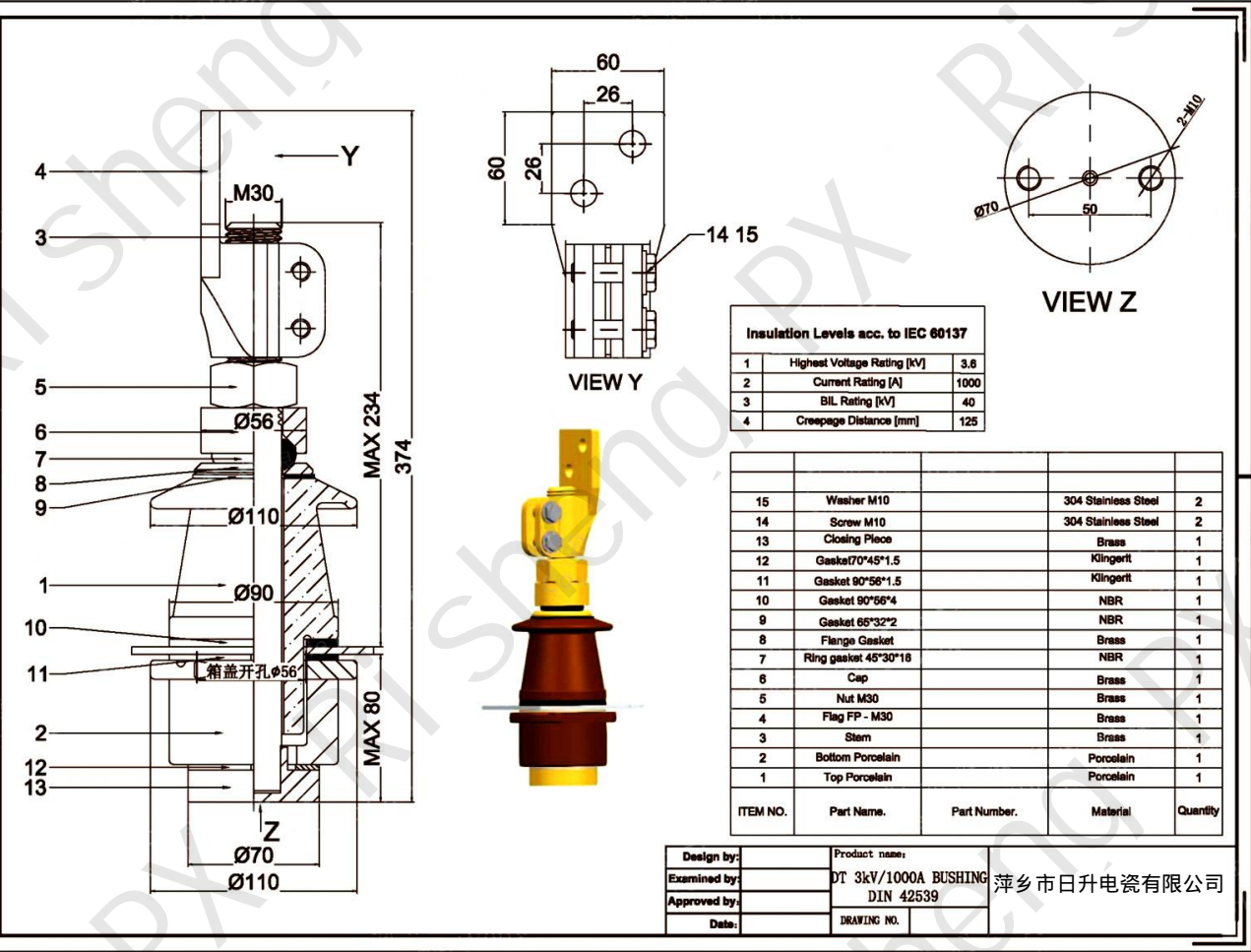
Insulation Levels acc. to IEC 60137

1	Highest Voltage Rating [kV]	3.6
2	Current Rating [A]	630
3	BL Rating [kV]	630
4	Creepage Distance [mm]	120

ITEM NO.	Part Name	Part Number	Material	Quantity
15	Half Nut M20		Brass	2
14	Closing Piece		Brass	1
13	Gasket 63°40'1.5		Klingerit	1
12	Gasket 0°45'1.5		Klingerit	1
11	Gasket 70°46'4		NBR	1
10	Gasket 45°22'2		NBR	1
9	Flange Gasket		Brass	1
8	Ring gasket 32°20'13		NBR	1
7	Cap		Brass	1
6	Washer		Brass	2
5	Spring Washer		304 Stainless Steel	1
4	Nut M20		Brass	3
3	Stem		Brass	1
2	Bottom Porcelain		Porcelain	1
1	Top Porcelain		Porcelain	1

Design by:	Product name:
Examined by:	DT 3kV/630A BUSHING
Approved by:	DIN 42539
Date:	DRAWING NO.

**DIN42539**



**Insulation Levels acc. to IEC 60137**

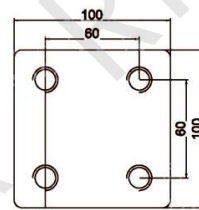
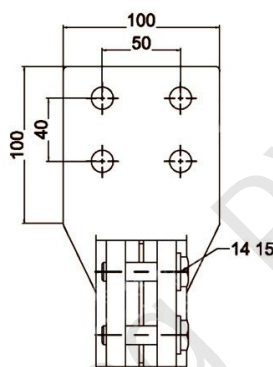
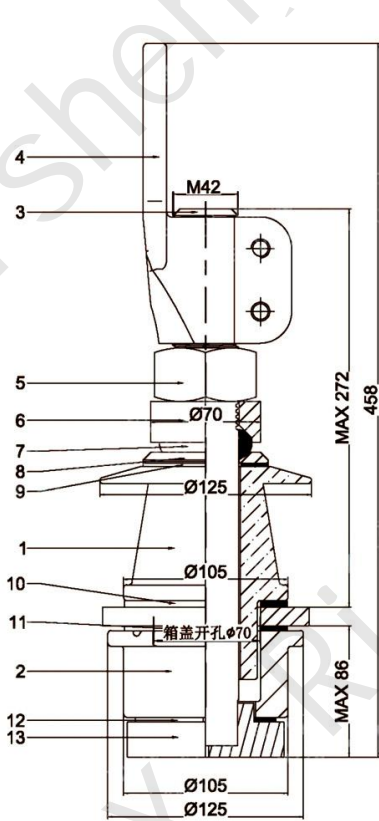
1	Highest Voltage Rating [kV]	3.8
2	Current Rating [A]	1000
3	BL. Rating [kV]	40
4	Creepage Distance [mm]	125

ITEM NO.	Part Name.	Part Number.	Material	Quantity
15	Washer M10		304 Stainless Steel	2
14	Screw M10		304 Stainless Steel	2
13	Closing Piece		Brass	1
12	Gasket 70*45*1.5		Klingerit	1
11	Gasket 90*56*1.5		Klingerit	1
10	Gasket 90*56*4		NBR	1
9	Gasket 65*32*2		NBR	1
8	Flange Gasket		Brass	1
7	Ring gasket 45*30*18		NBR	1
6	Cap		Brass	1
5	Nut M30		Brass	1
4	Flag FP - M30		Brass	1
3	Stem		Brass	1
2	Bottom Porcelain		Porcelain	1
1	Top Porcelain		Porcelain	1

Design by:	Product name:	萍乡市日升陶瓷有限公司
Examined by:	DT 3kV/1000A BUSHING	
Approved by:	DIN 42539	
Date:	DRAWING NO.	



DIN42539



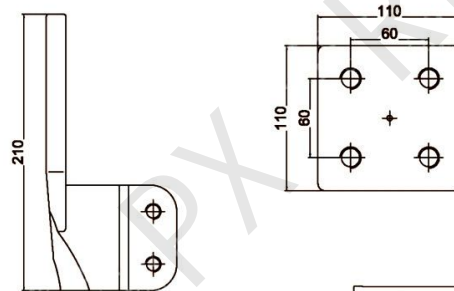
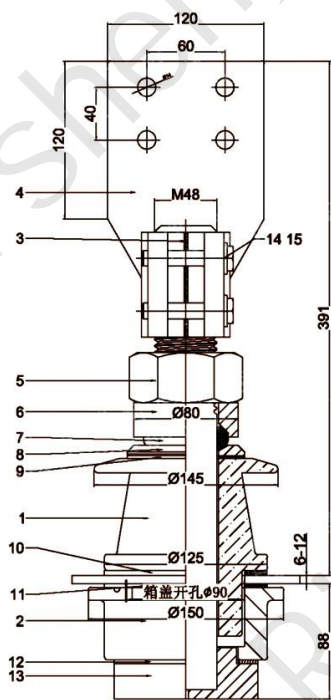
Insulation Levels acc. to IEC 60137	
1	Highest Voltage Rating [kV] 3.6
2	Current Rating [A] 2000
3	BlL Rating [kV] 40
4	Creepage Distance [mm] 125

ITEM NO.	Part Name.	Part Number.	Material	Quantity
15	Washer M12		304 Stainless Steel	2
14	Screw M12		304 Stainless Steel	2
13	Closing Piece		Brass	1
12	Gasket 90°63°1.5		Klingerit	1
11	Gasket 104°70°1.5		Klingerit	1
10	Gasket 104°70°4		NBR	1
9	Gasket 80°45°2		NBR	1
8	Flange Gasket		Brass	1
7	Ring gasket 59°42°18		NBR	1
6	Cap		Brass	1
5	Nut M42		Brass	1
4	Flag FP - M42		Brass	1
3	Stem		Brass	1
2	Bottom Porcelain		Porcelain	1
1	Top Porcelain		Porcelain	1



Design by:	Product name:	萍乡市日升陶瓷有限公司
Examined by:	DT 3kV/2000A BUSHING	
Approved by:	DIN 42539	
Date:	DRAWING NO.	

**DIN42539**

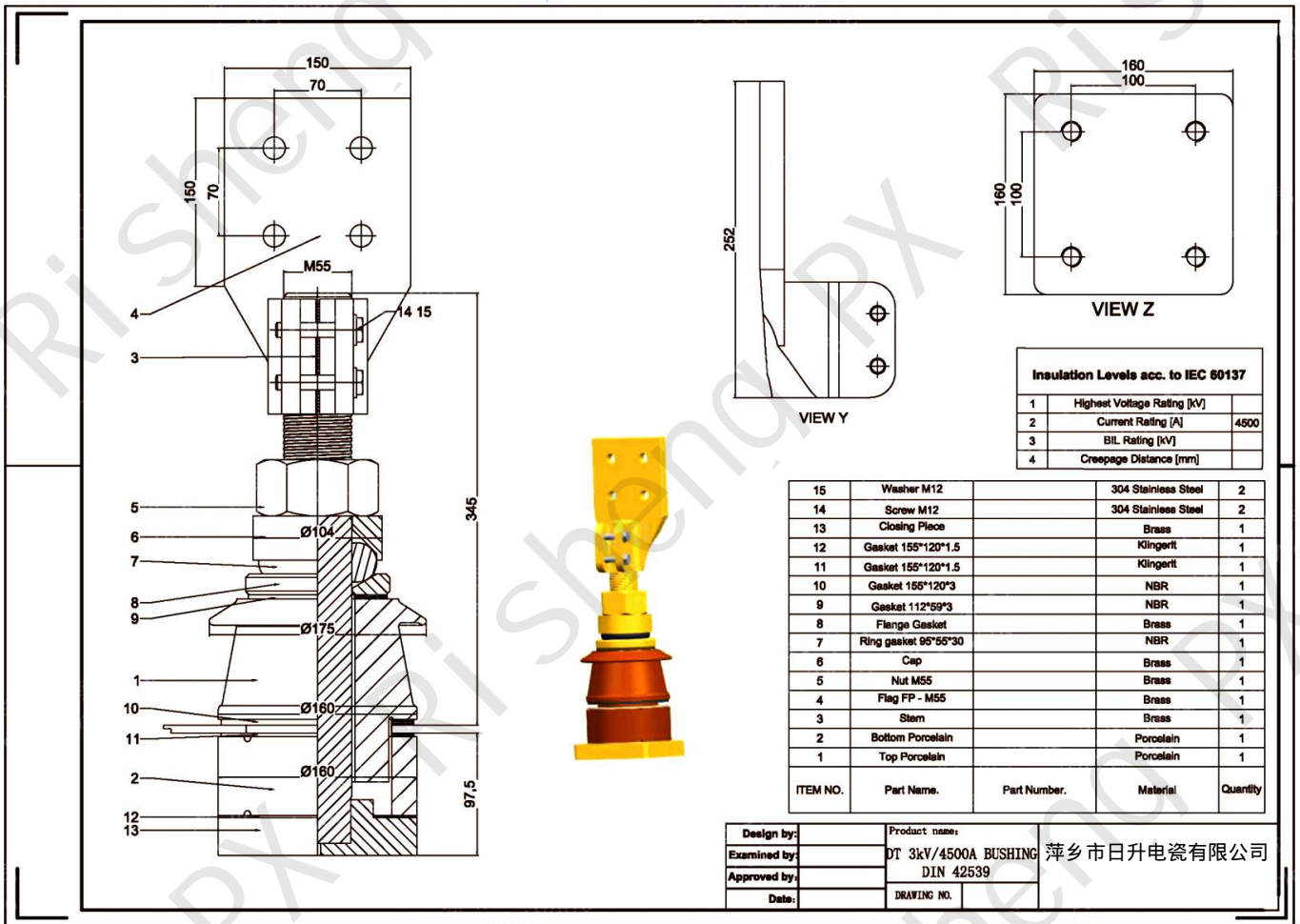


Insulation Levels acc. to IEC 60137	
1	Highest Voltage Rating [kV] 3.6
2	Current Rating [A] 3160
3	BIL Rating [kV] 40
4	Creepage Distance [mm] 125

ITEM NO.	Part Name.	Part Number.	Material	Quantity
15	Washer M12		304 Stainless Steel	2
14	Screw M12		304 Stainless Steel	2
13	Closing Piece		Brass	1
12	Gasket 110°80°1.5		Klingerit	1
11	Gasket 125°90°1.5		Klingerit	1
10	Gasket 125°90°4		NBR	1
9	Gasket 90°50°2		NBR	1
8	Flange Gasket		Brass	1
7	Ring gasket 65°48°18		NBR	1
6	Cap		Brass	1
5	Nut M48		Brass	1
4	Flag FP - M48		Brass	1
3	Stem		Brass	1
2	Bottom Porcelain		Porcelain	1
1	Top Porcelain		Porcelain	1

Design by:	Product name:	萍乡市日升电瓷有限公司
Examined by:	DT 3kV/3150A BUSHING	
Approved by:	DIN 42539	
Date:	DRAWING NO.	

DIN42539



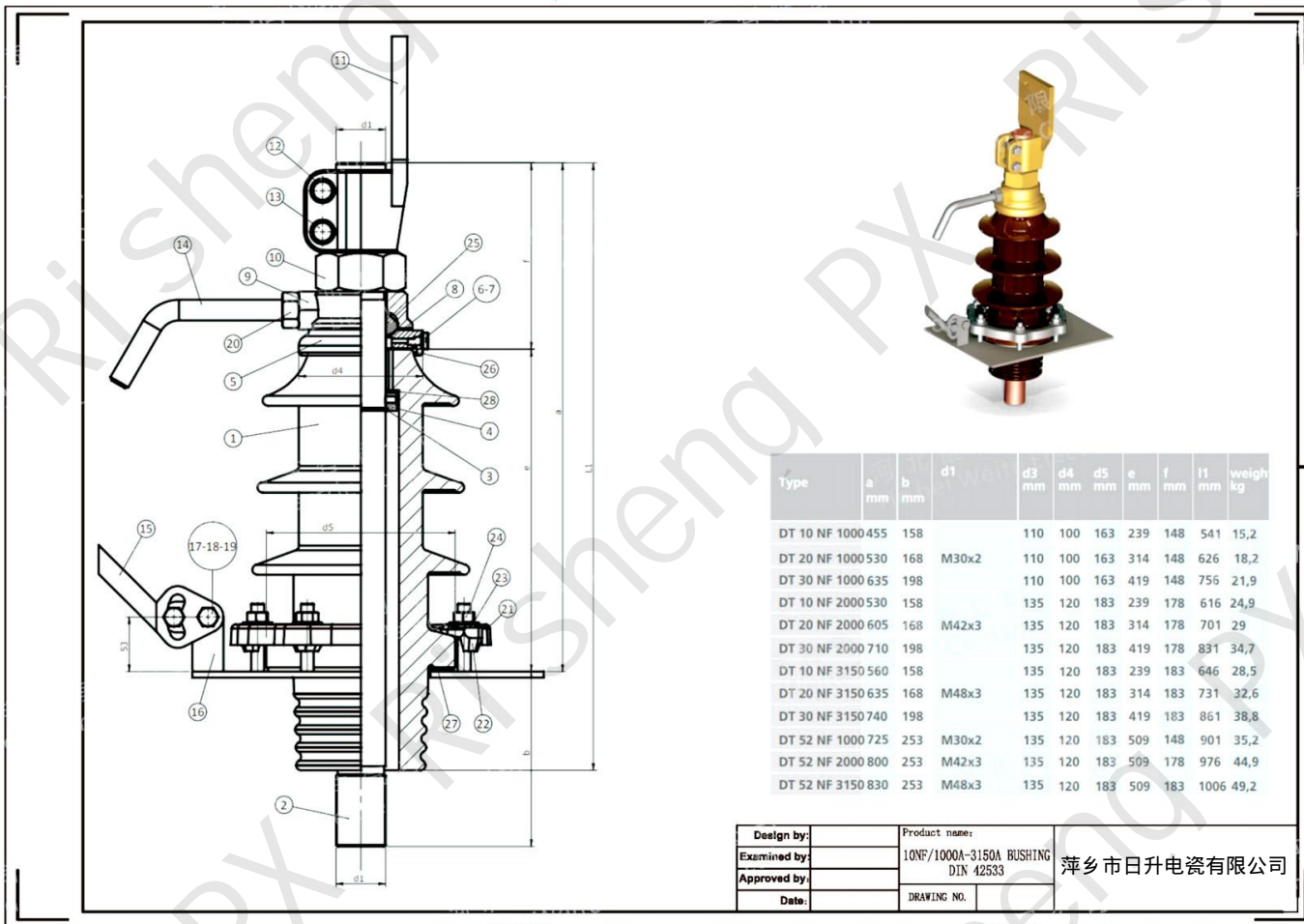
**Insulation Levels acc. to IEC 60137**

1	Highest Voltage Rating [kV]	
2	Current Rating [A]	4800
3	BIL Rating [kV]	
4	Creepage Distance [mm]	

15	Washer M12		304 Stainless Steel	2
14	Screw M12		304 Stainless Steel	2
13	Closing Piece		Brass	1
12	Gasket 155*120*1.5		Klingerit	1
11	Gasket 155*120*1.5		Klingerit	1
10	Gasket 155*120*3		NBR	1
9	Gasket 112*59*3		NBR	1
8	Flange Gasket		Brass	1
7	Ring gasket 95*55*30		NBR	1
6	Cap		Brass	1
5	Nut M55		Brass	1
4	Flag FP - M55		Brass	1
3	Stem		Brass	1
2	Bottom Porcelain		Porcelain	1
1	Top Porcelain		Porcelain	1

Design by:	Product name:	萍乡市日升电瓷有限公司
Examined by:	DT 3kV/4500A BUSHING	
Approved by:	DIN 42539	
Date:	DRAWING NO.	

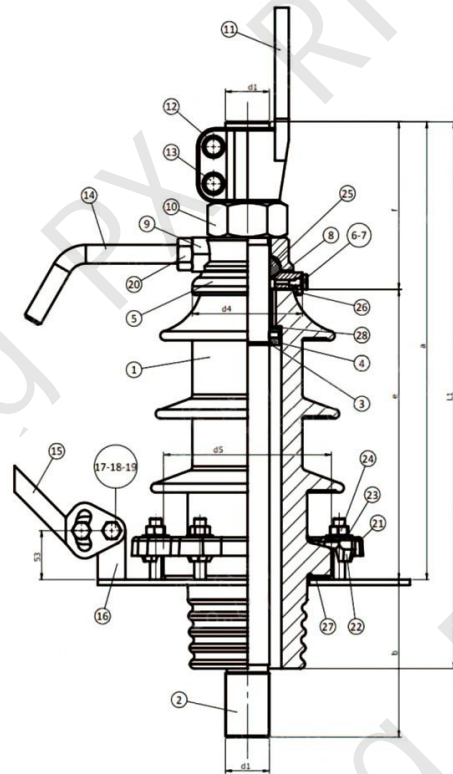
DIN42533



### DIN42533

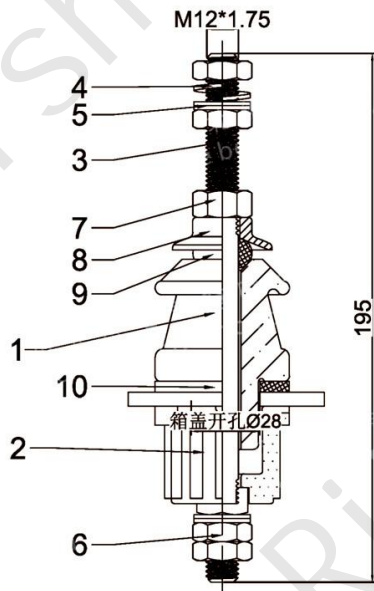
Pos. No.	Description	Material	10-30 NF 1000-3150 Pcs.	52 NF 1000-3150 Pcs.
1	porcelain A	C110	1	1
2	Connecting Bolt	Cu-ETP	1	1
3	Ring S	CuZn40Pb2	1	1
4	Press ring	CuZn40Pb2	1	1
5	Cap E	CuZn40Pb2	1	1
6	Screw R	CuZn40Pb2	1	1
7	Flat Gasket F	PA6	1	1
8	Ring U	Cu-ETP	1	1
9	Washer F	CuZn40Pb2	1	1
10	Hexagon nut	CuZn40Pb2	1	1
11	Connecting Flag	CuZn40Pb2	1	1
12	Spring Washer	A2	2	2
13	Hexagon nut	A2	2	2
14	Upper arcing horn	A2	1	1

Pos. No.	Description	Material	10-30 NF 1000-3150 Pcs.	52 NF 1000-3150 Pcs.
1	Unteres Funkenhorn	A2	1	1
2	arcng horn holder	A2	1	1
3	Spring Lock Washer	A2	2	2
4	Hexagon screw	A2	2	2
5	Hexagon nut	A2	2	2
6	Hexagon nut	A2	1	1
7	Flangering	Al	1	1
8	Press bit	G-ZnAl6Cu1	6	6
9	washer	A2	6	6
10	Hexagon nut	A2	6	6
11	Ring gasket J	NBR	1	1
9	Flat gasket M	NBR	1	1
10	Flat gasket N	NBR	1	1
11	gasket O	Pressspan	1	1



Design by:	Product name:	萍乡市日升电瓷有限公司
Examined by:	10NF/1000A-3150A BUSHING DIN 42533	
Approved by:	DRAWING NO.	
Date:		

EN50386

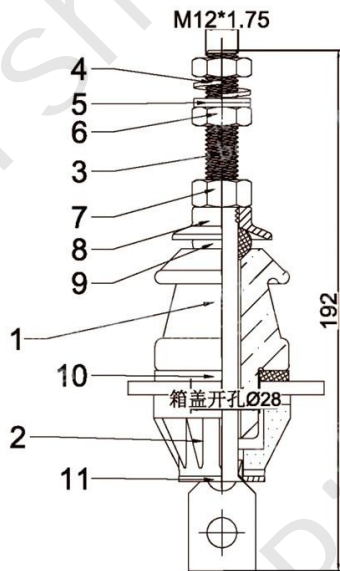


Insulation Levels acc. to IEC 60137		
1	Highest Voltage Rating [kV]	1.1
2	Current Rating [A]	250
3	BIL Rating [kV]	40
4	Creepage Distance [mm]	50

ITEM NO.	Part Name.	Part Number.	Material	Quantity
10	Gasket 50°28°6		NBR	1
9	Ring gasket 22°12°11		NBR	1
8	Cap		Brass	1
7	Nut M12		Brass	2
6	Lock Nut M12		Brass	4
5	Washer		304 Stainless Steel	1
4	Spring Washer		Brass	4
3	Stem		Brass	1
2	尼龙底座		PA6 GF30	1
1	Top Porcelain		Porcelain	1

Design by:	Product name:	萍乡市日升电气有限公司
Examined by:	EN 1kV/250A-3	
Approved by:	DRAWING NO.	
Date:		

EN50386

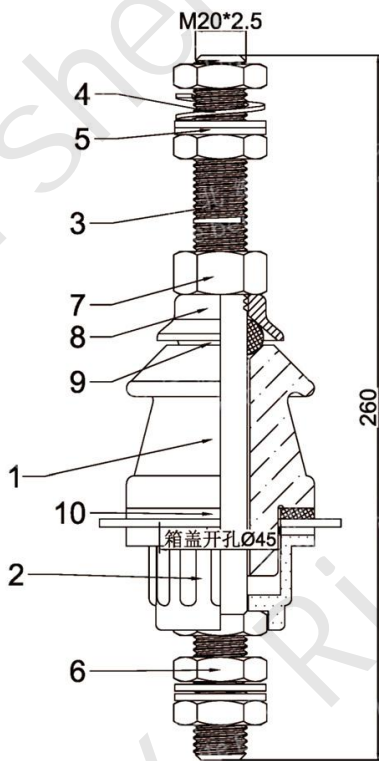


Insulation Levels acc. to IEC 60137		
1	Highest Voltage Rating [kV]	1.1
2	Current Rating [A]	250
3	BIL Rating [kV]	40
4	Creepage Distance [mm]	50

11	Bottom Gasket		Brass	1
10	Gasket 50°28'5		NBR	1
9	Ring gasket 22°12'11		NBR	1
8	Cap		Brass	1
7	Nut M12		Brass	1
6	Lock Nut M12		Brass	2
5	Washer		304 Stainless Steel	1
4	Spring Washer		Brass	2
3	Stem		Brass	1
2	尼龙底座		PA6 GF30	1
1	Top Porcelain		Porcelain	1
ITEM NO.	Part Name.	Part Number.	Material	Quantity

Design by:	Product name:	萍乡市日升陶瓷有限公司
Examined by:	EN 1kV/250A-4	
Approved by:	DRAWING NO.	
Date:		

EN50386



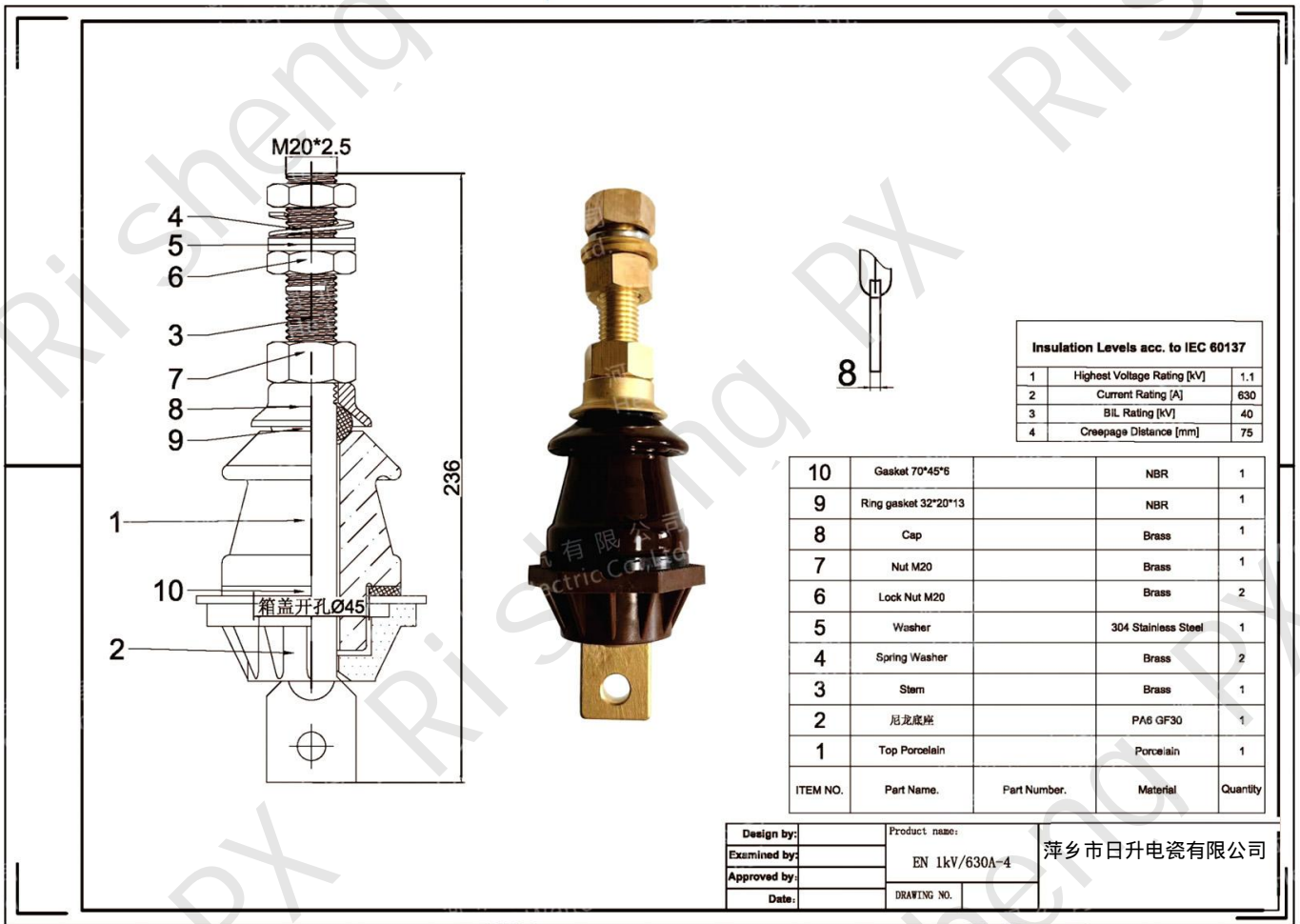
Insulation Levels acc. to IEC 60137		
1	Highest Voltage Rating [kV]	1.1
2	Current Rating [A]	630
3	BIL Rating [kV]	40
4	Creepage Distance [mm]	75

ITEM NO.	Part Name.	Part Number.	Material	Quantity
10	Gasket 70°45'6		NBR	1
9	Ring gasket 32°20'13		NBR	1
8	Cap		Brass	1
7	Nut M20		Brass	1
6	Lock Nut M20		Brass	5
5	Washer		304 Stainless Steel	1
4	Spring Washer		Brass	4
3	Stem		Brass	1
2	尼龙底座		PA6 GF30	1
1	Top Porcelain		Porcelain	1

Design by:	Product name:	萍乡市日升电瓷有限公司
Examined by:	EN 1kV/630A-3	
Approved by:	DRAWING NO.	
Date:		



EN50386



Insulation Levels acc. to IEC 60137		
1	Highest Voltage Rating [kV]	1.1
2	Current Rating [A]	630
3	BIL Rating [kV]	40
4	Creepage Distance [mm]	75

ITEM NO.	Part Name.	Part Number.	Material	Quantity
10	Gasket 70°45'6		NBR	1
9	Ring gasket 32°20'13		NBR	1
8	Cap		Brass	1
7	Nut M20		Brass	1
6	Lock Nut M20		Brass	2
5	Washer		304 Stainless Steel	1
4	Spring Washer		Brass	2
3	Stem		Brass	1
2	尼龙底座		PA6 GF30	1
1	Top Porcelain		Porcelain	1

Design by:	Product name:	萍乡市日升电瓷有限公司
Examined by:	EN 1kV/630A-4	
Approved by:	DRAWING NO.	
Date:		

EN50386

1	Highest Voltage Rating [kV]	1.1
2	Current Rating [A]	1000
3	BL Rating [kV]	40
4	Creepage Distance [mm]	75

ITEM NO.	Part Name.	Part Number.	Material	Quantity
11	Washer M10		304 Stainless Steel	2
10	Screw M10		304 Stainless Steel	2
9	Closing Piece		Brass	1
8	Gasket 90°55°6		NBR	1
7	Ring gasket 45°30°18		NBR	1
6	Cap		Brass	1
5	Lock Nut M30		Brass	1
4	Stem		Brass	1
3	Flag FP - M30		Brass	1
2	尼龙底座		PA6 GF30	1
1	Top Porcelain		Porcelain	1

Design by:	Product name:	萍乡市日升电气有限公司
Examined by:	1kV/1000A-2	
Approved by:	DRAWING NO.	
Date:		

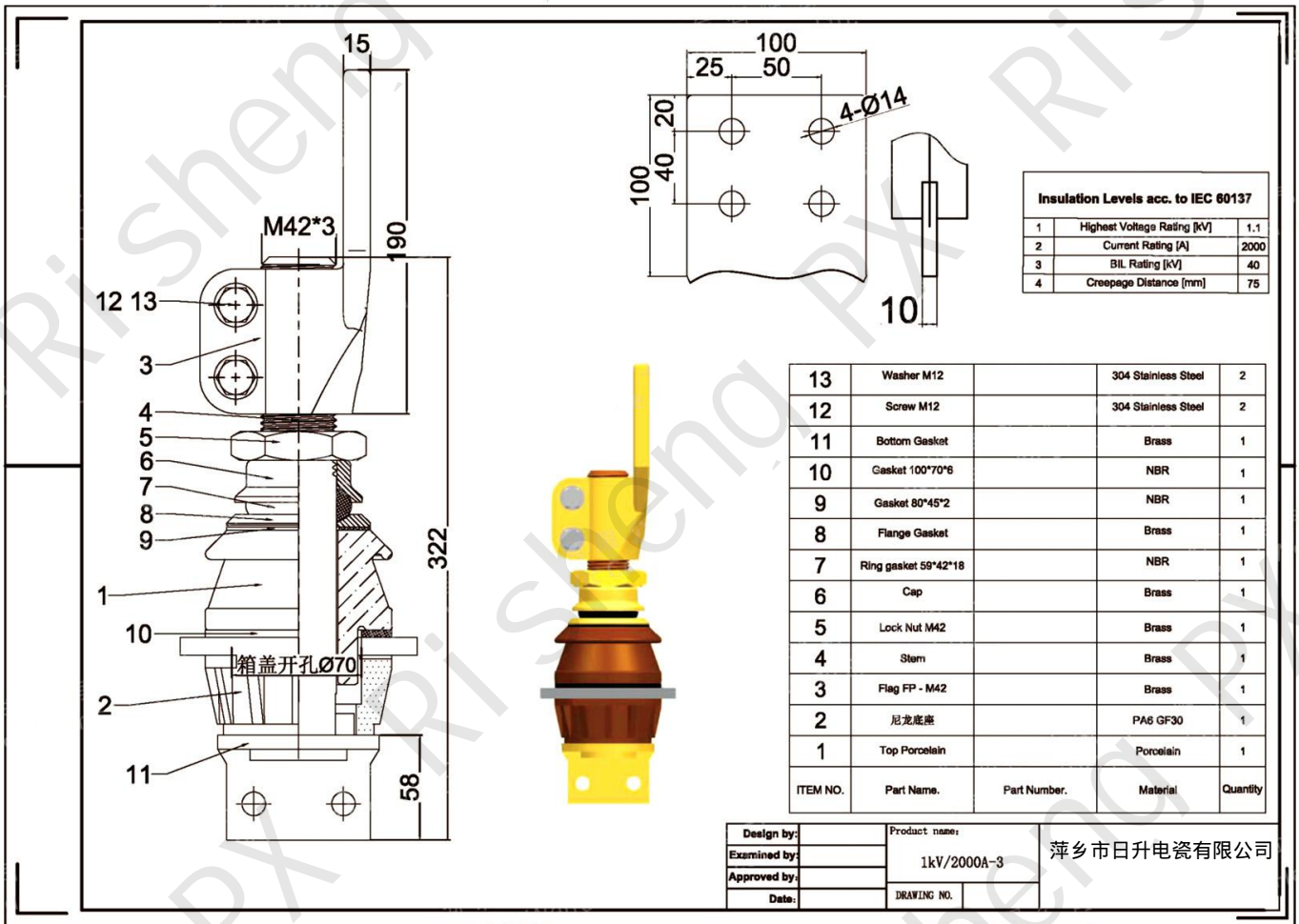
EN50386

Insulation Levels acc. to IEC 60137		
1	Highest Voltage Rating [kV]	1.1
2	Current Rating [A]	1000
3	BIL Rating [kV]	40
4	Creepage Distance [mm]	75

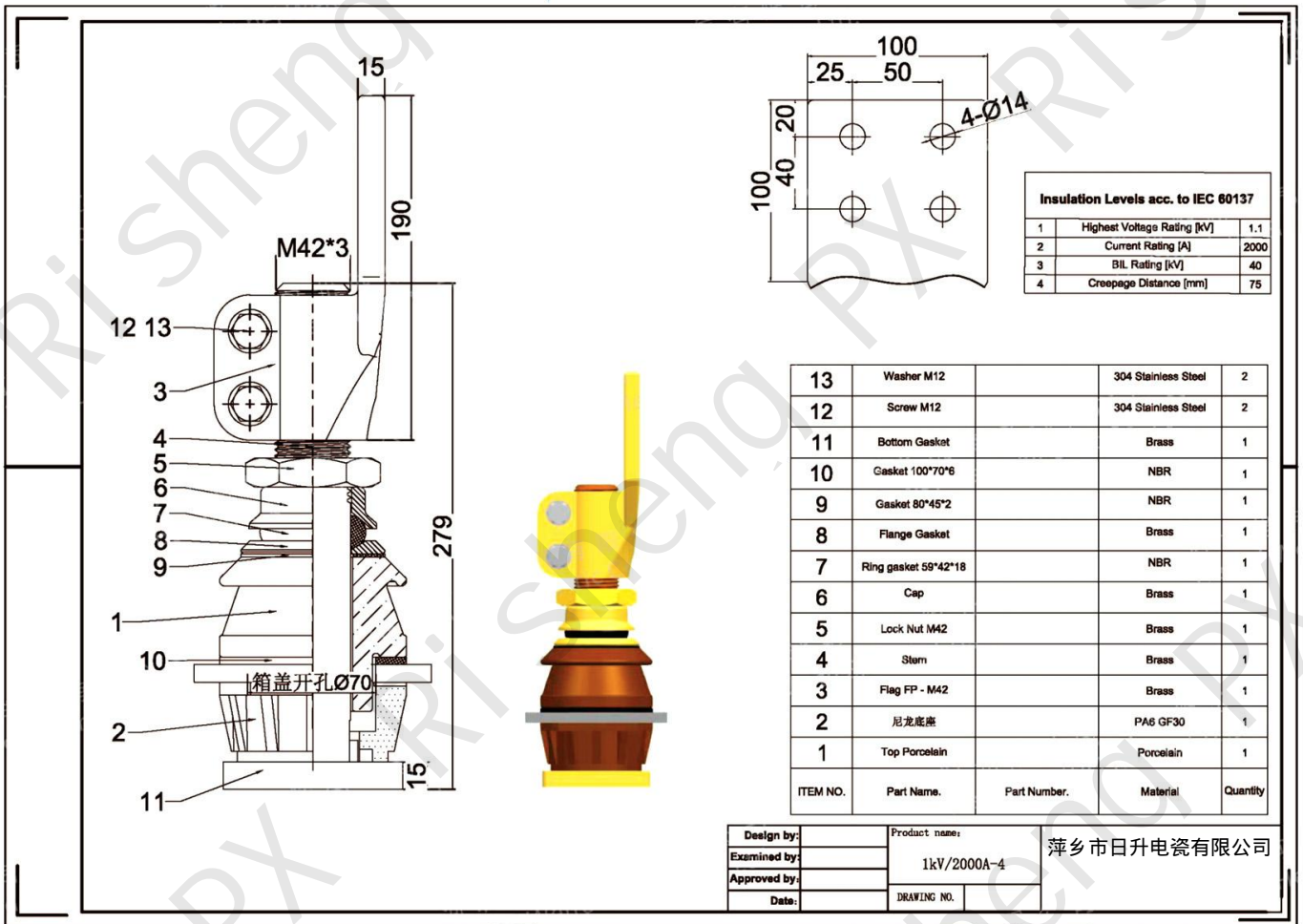
ITEM NO.	Part Name.	Part Number.	Material	Quantity
10	Washer M10		304 Stainless Steel	2
9	Screw M10		304 Stainless Steel	2
8	Gasket 90°55°6		NBR	1
7	Ring gasket 45°30°16		NBR	1
6	Cap		Brass	1
5	Lock Nut M30		Brass	1
4	Stem		Brass	1
3	Flag FP - M30		Brass	1
2	尼龙底座		PA6 GF30	1
1	Top Porcelain		Porcelain	1

Design by:	Product name:	萍乡市日升电瓷有限公司
Examined by:	1kV/1000A-3	
Approved by:	DRAWING NO.	
Date:		

EN50386



EN50386

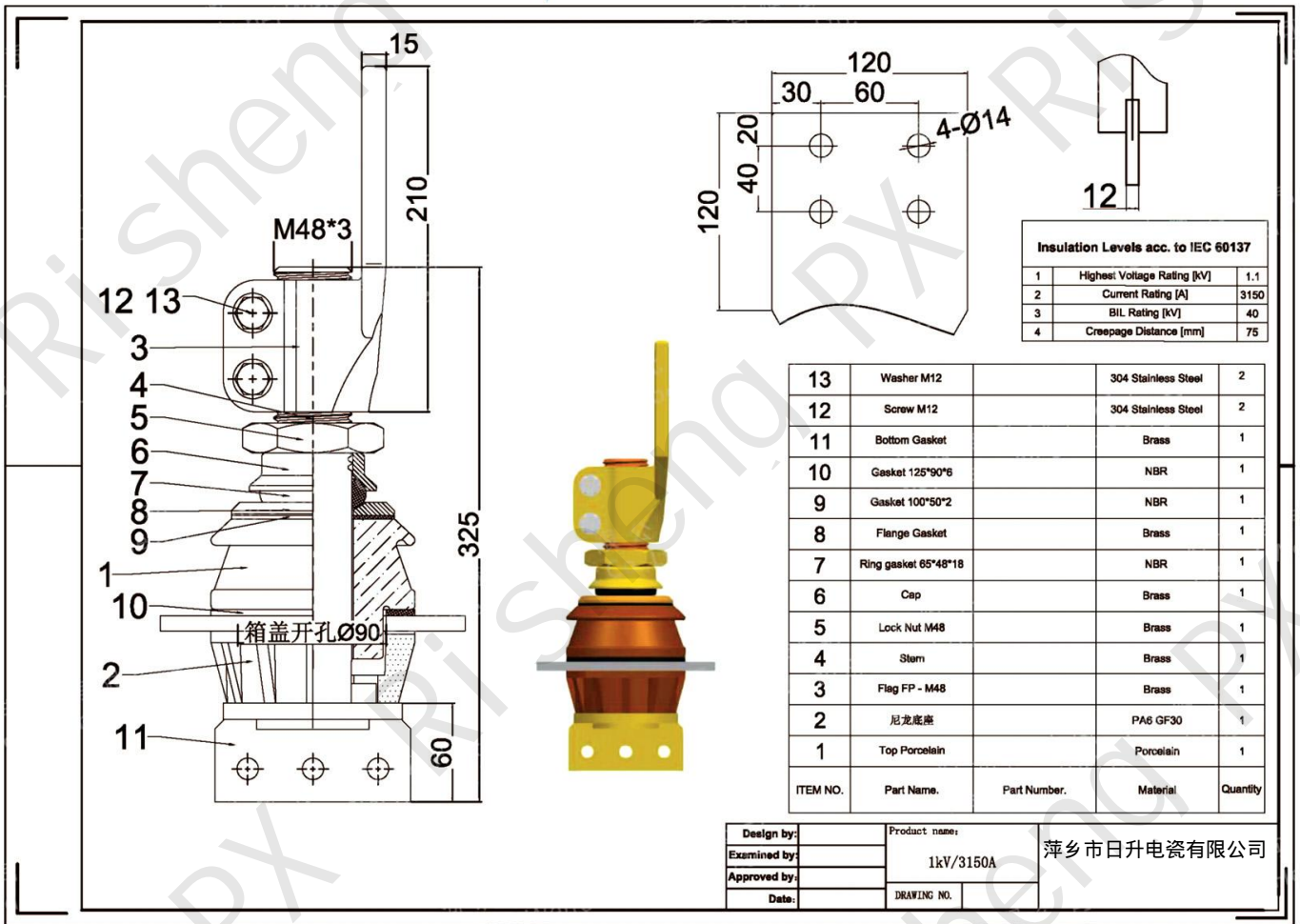


Insulation Levels acc. to IEC 60137		
1	Highest Voltage Rating [kV]	1.1
2	Current Rating [A]	2000
3	BIL Rating [kV]	40
4	Creepage Distance [mm]	75

ITEM NO.	Part Name.	Part Number.	Material	Quantity
13	Washer M12		304 Stainless Steel	2
12	Screw M12		304 Stainless Steel	2
11	Bottom Gasket		Brass	1
10	Gasket 100*70*6		NBR	1
9	Gasket 80*45*2		NBR	1
8	Flange Gasket		Brass	1
7	Ring gasket 59*42*18		NBR	1
6	Cap		Brass	1
5	Lock Nut M42		Brass	1
4	Stem		Brass	1
3	Flag FP - M42		Brass	1
2	尼龙底座		PA6 GF30	1
1	Top Porcelain		Porcelain	1

Design by:	Product name:	萍乡市日升电瓷有限公司
Examined by:	1kV/2000A-4	
Approved by:	DRAWING NO.	
Date:		

EN50386

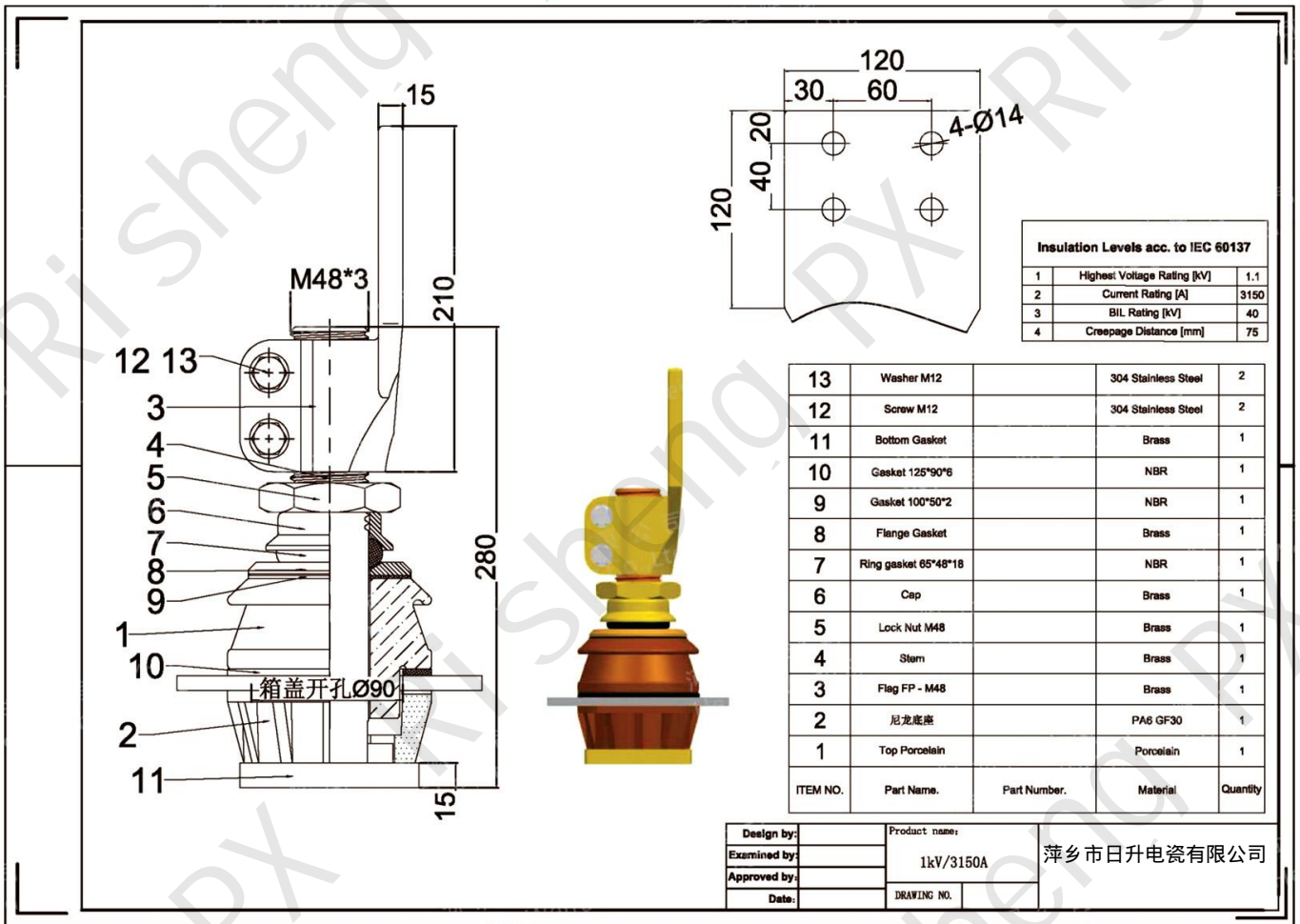


Insulation Levels acc. to IEC 60137		
1	Highest Voltage Rating [kV]	1.1
2	Current Rating [A]	3150
3	BIL Rating [kV]	40
4	Creepage Distance [mm]	75

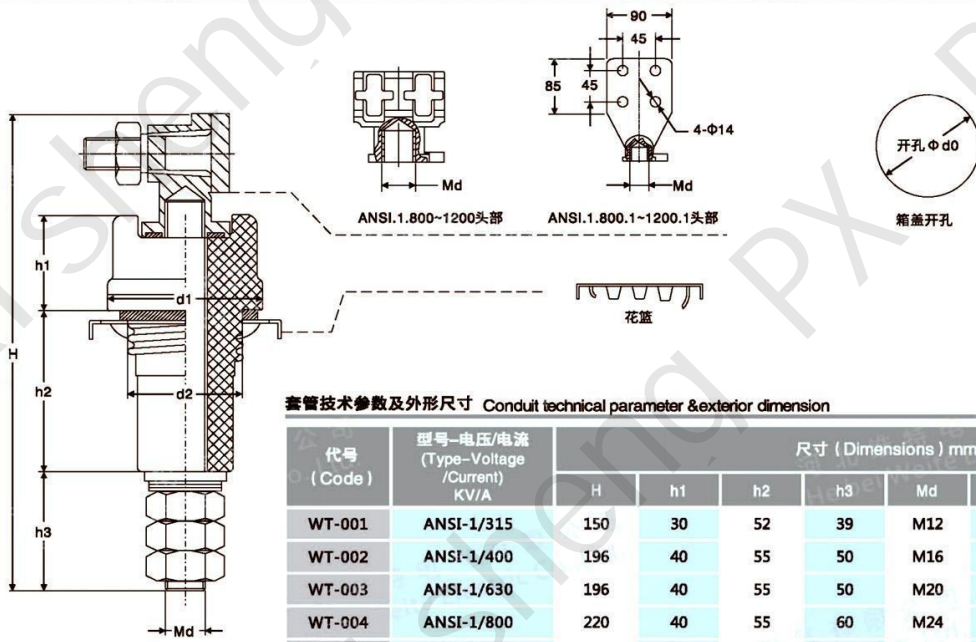
ITEM NO.	Part Name.	Part Number.	Material	Quantity
13	Washer M12		304 Stainless Steel	2
12	Screw M12		304 Stainless Steel	2
11	Bottom Gasket		Brass	1
10	Gasket 125*90*6		NBR	1
9	Gasket 100*50*2		NBR	1
8	Flange Gasket		Brass	1
7	Ring gasket 65*48*18		NBR	1
6	Cap		Brass	1
5	Lock Nut M48		Brass	1
4	Stem		Brass	1
3	Flag FP - M48		Brass	1
2	尼龙底座		PA6 GF30	1
1	Top Porcelain		Porcelain	1

Design by:	Product name:	萍乡市日升电气有限公司
Examined by:	1kV/3150A	
Approved by:	DRAWING NO.	
Date:		

EN50386



ANSI series



套管技术参数及外形尺寸 Conduit technical parameter & exterior dimension

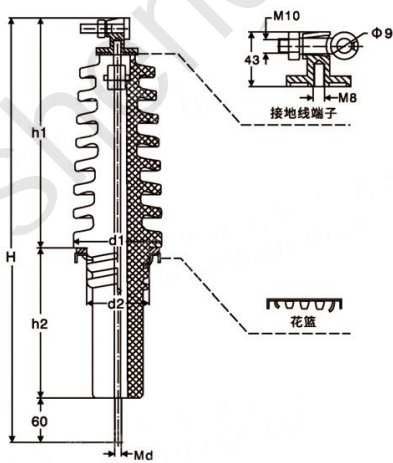
代号 (Code)	型号-电压/电流 (Type-Voltage /Current) KV/A	尺寸 (Dimensions) mm							
		H	h1	h2	h3	Md	d0	d1	d2
WT-001	ANSI-1/315	150	30	52	39	M12	37	50	34
WT-002	ANSI-1/400	196	40	55	50	M16	70	95	65
WT-003	ANSI-1/630	196	40	55	50	M20	70	95	65
WT-004	ANSI-1/800	220	40	55	60	M24	70	95	65
WT-005	ANSI-1/800	295	40	55	60	M24	70	95	65
WT-006	ANSI-1/1000	305	58	75	70	M30	75	95	70
WT-007	ANSI-1/1000	370	58	75	70	M30	75	95	70
WT-008	ANSI-1/1200	305	58	75	70	M33	75	95	70
WT-009	ANSI-1/1200	370	58	75	70	M33	75	95	70

Design by:	Product name:
Examined by:	ANSI-1KV/315A-1200A BUSHING
Approved by:	DRAWING NO.
Date:	

萍乡市日升电瓷有限公司



ANSI series

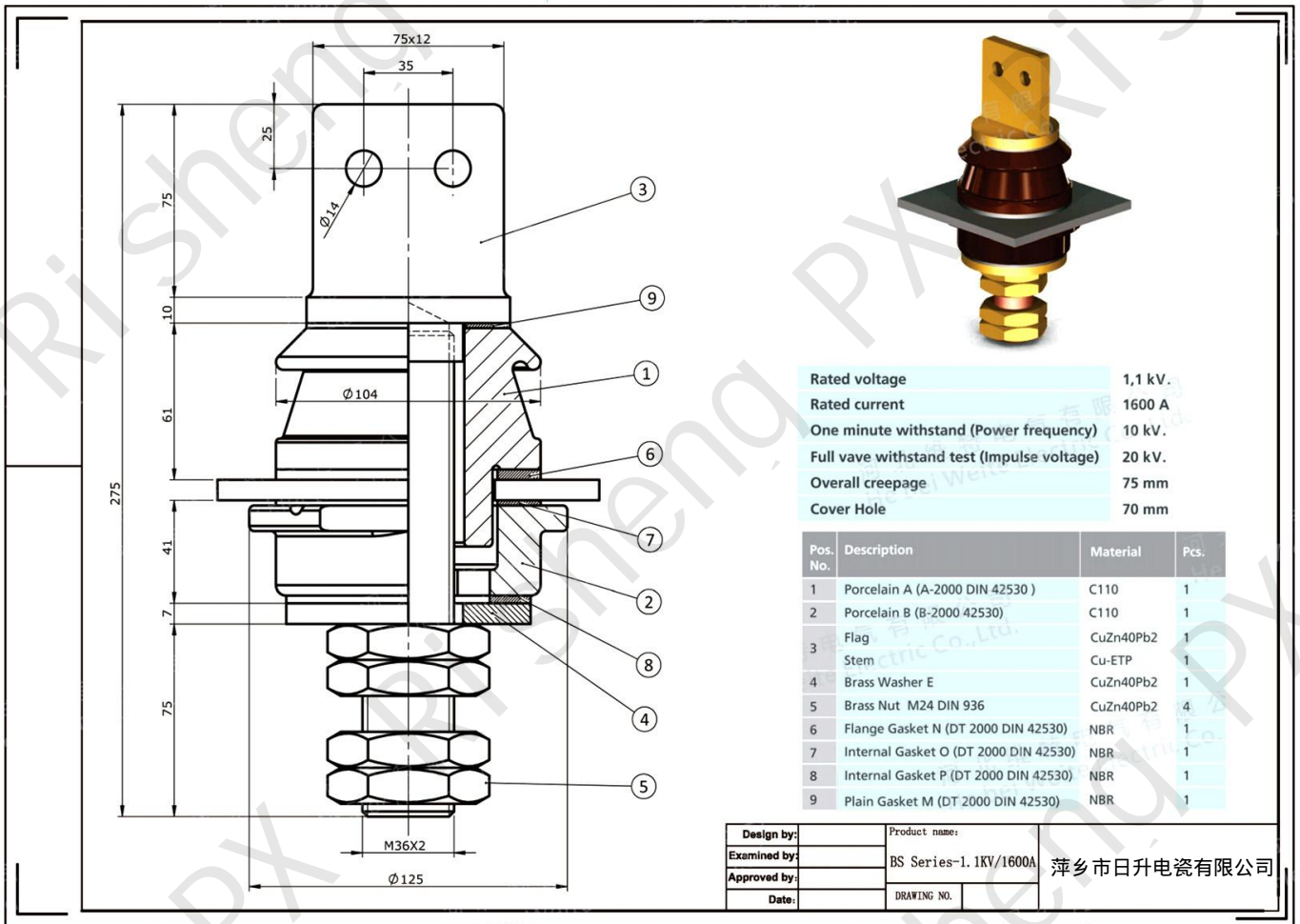


套管技术参数及外形尺寸 Conduit technical parameter & exterior dimension

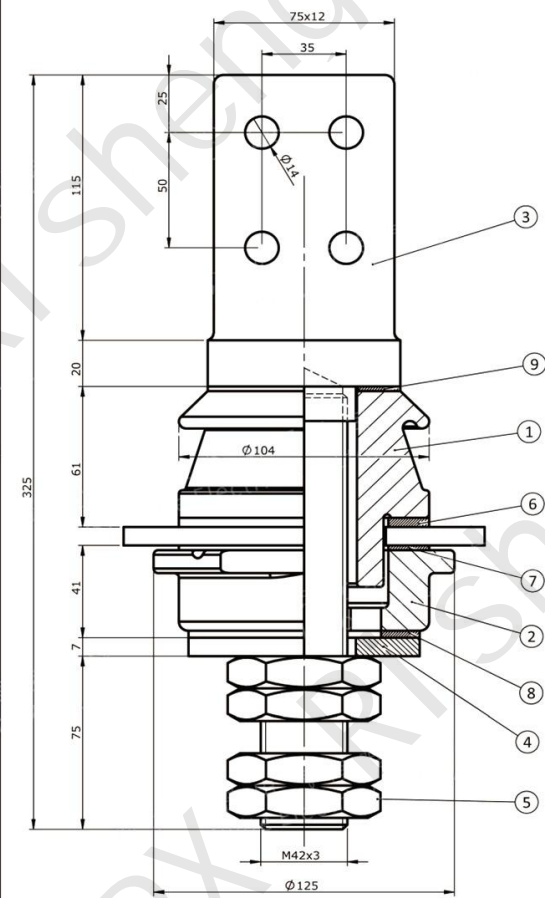
代号 (Code)	型号-电压/电流 (Type-Voltage /Current) KV/A	尺寸 (Dimensions) mm								伞形 (Shape)	爬电距离 (Creepage Distance) mm
		H	h1	h2	h3	Md	d0	d1	d2		
WT-001	ANSI-10/315	355	205	90	60	M8×1.5	70	100	68	5单伞	280
WT-002	ANSI-15/315	505	260	185	60	M8×1.5	70	100	68	8单伞	430
WT-003	ANSI-20/315	565	320	185	60	M8×1.5	70	100	68	9单伞	490
WT-004	ANSI-24/315	690	390	240	60	M8×1.5	70	100	68	12单伞	615

Design by:	Product name:	萍乡市日升电瓷有限公司
Examined by:	ANSI 10KV-24KV/315A	
Approved by:	DRAWING NO.	
Date:		

**BS series**



**BS series**

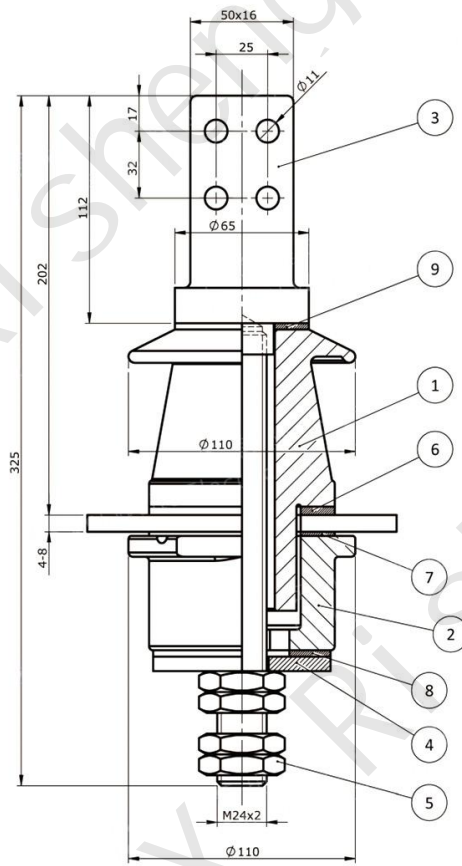


Rated voltage  
 Rated Current  
 One Minute Withstand (Power frequency)  
 Full Vave Withstand Test (Impulse voltage)  
 Overall Creepage  
 Cover Hole

Pos. No.	Description	Material
1	Porcelain A (A-2000 DIN 42539 )	C110
2	Porcelain B (B-2000 42539)	C110
3	Flag	CuZn40Pb2
4	Stem	Cu-ETP
5	Brass Washer E	CuZn40Pb2
6	Brass Nut M42 DIN 936	CuZn40Pb2
7	Flange Gasket N (DT 2000 DIN 42539)	NBR
8	Internal Gasket O (DT 2000 DIN 42539)	NBR
9	Internal Gasket P (DT 2000 DIN 42539)	NBR
10	Plain Gasket M (DT 2000 DIN 42539)	NBR

Design by:	Product name:	
Examined by:	BS Series-1, 1KV/2500A	萍乡市日升陶瓷有限公司
Approved by:	DRAWING NO.	
Date:		

**BS series**



1. This is bushing generally meets the requirement  
DF DIN Standard 42539 (A 3-1000)
2. Standart BIL
3. Mounting hole size:56mm
4. Minimum creepage distance : 125mm
5. Bushing packing weight : 7kg (Approx)

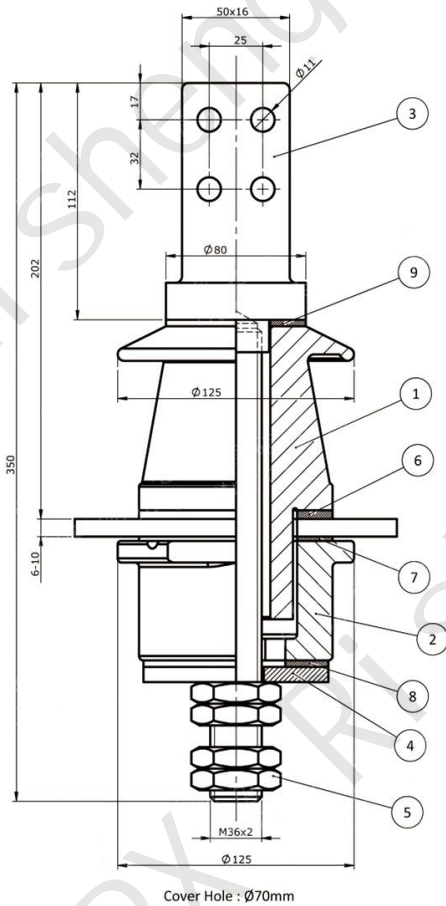


Pos. No.	Description	Material	Pcs.
1	Porcelain A (A-1000 DIN 42539)	C110	1
2	Porcelain B (B-1000 42539)	C110	1
3	Flag	CuZn40Pb2	1
4	Stem	Cu-ETP	1
5	Brass Washer E	CuZn40Pb2	1
6	Brass Nut M24 DIN 936	CuZn40Pb2	4
7	Flange Gasket N (DT 1000 DIN 42539)	NBR	1
8	Internal Gasket O (DT 1000 DIN 42539)	NBR	1
9	Internal Gasket P (DT 1000 DIN 42539)	NBR	1
10	Plain Gasket M (DT 1000 DIN 42539)	NBR	1

<b>Design by:</b>	Product name:	<b>萍乡市日升电瓷有限公司</b>
<b>Examined by:</b>	BS Series-3KV/850A	
<b>Approved by:</b>	DRAWING NO.	
<b>Date:</b>		

Cover Hole :  $\varnothing$ 56mm

## BS series



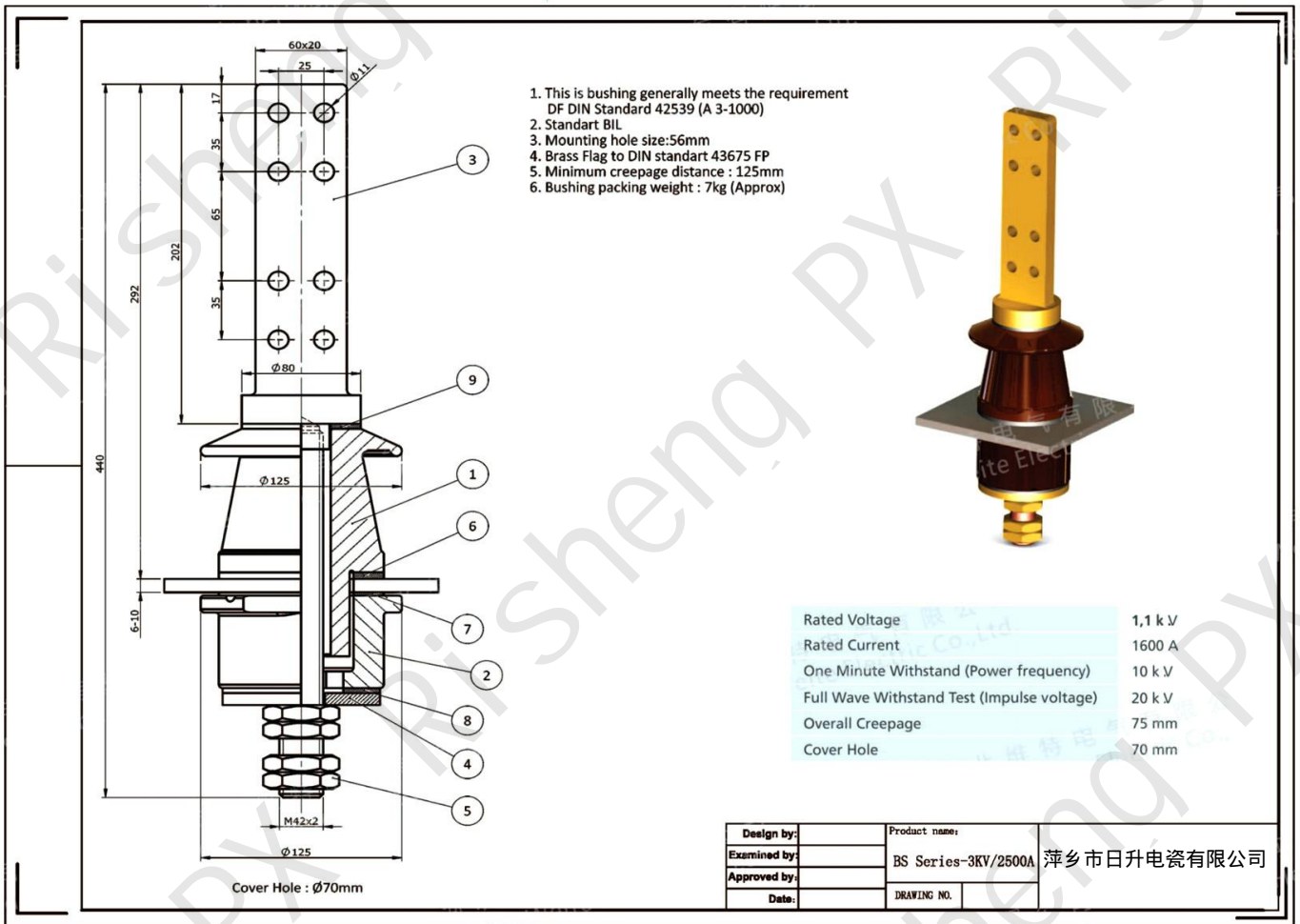
1. This is bushing generally meets the requirement  
DP DIN Standard 42539 (DT 2000)
2. Standart BIL level
3. Mounting hole size: 70mm
4. Brass Flag to DIN standard 43675 FP
5. Minimum creepage distance : 125mm
6. Bushing packing weight : 17kg (Approx)



Pos. No.	Description	Material	Pcs.
1	porcelain A (A-2000 DIN 42539)	C110	1
2	porcelain B (B-2000 42539)	C110	1
3	Flag	CuZn40Pb2	1
4	Stem	Cu-ETP	1
5	Brass Washer E	CuZn40Pb2	1
6	Brass Nut M36 DIN 936	CuZn40Pb2	4
7	Flange Gasket N (DT 2000 DIN 42539)	NBR	1
8	Internal Gasket O (DT 2000 DIN 42539)	NBR	1
9	Internal Gasket P (DT 2000 DIN 42539)	NBR	1
10	Plain Gasket M (DT 2000 DIN 42539)	NBR	1

Design by:	Product name:	萍乡市日升电气有限公司
Examined by:	BS Series-3KV/1600A	
Approved by:	DRAWING NO.	
Date:		

## BS series



**BS series**

